

# EWR2 Project Newsletter Spring 2022

Bletchley



EWR Alliance



# East West Rail Phase 2

## Project Newsletter



New track near Bletchley High Level Station

To read the electronic version of this newsletter, scan the QR Code:



**ATKINS**  
Member of the SNC-Lavalin Group



### Welcome

Welcome to the spring 2022 issue of the EWR2 Project Newsletter. As you will read about below, our earthworks programme is largely complete, which enables the completion of the remaining bridge works, landscaping and other minor works to be handed over to our track teams. So far this year the track team have installed circa 3.5 linear kilometres of track over the Bletchley Flyover and to the area immediately west.

As track construction moves progressively through the project, please be aware that there will be train movements within our construction sites which will present a significant danger to those who are not trained and authorised to be in the area. For this reason, it is important that people do not trespass into the construction site and stay outside the boundary fencing. Warning signs will be installed before we begin track construction in each area.

Elsewhere on the project, two of the five new road overbridges required for the project, namely Salden Lane (near Newton Longville) and Station Road (near Launton) have successfully opened to the public, as have two further footbridges. At the west end of the project, we remain on target to complete the final traffic diversion and fully open the road on the Charbridge Lane bridge in summer 2022. Good progress has also been made at Winslow Station where 90% of the platforms have been completed and construction of the station building will commence shortly.

The physical progress on site is, of course, important to the successful delivery of the project, however, the Alliance has also committed to leaving a lasting social legacy. As such, I am pleased to report that in the financial year 2021/2022, the Alliance successfully delivered over £1m of social value activity. You can read more about how this has been achieved below, however, we are proud that the Alliance has been able to have this impact and I would like to thank our local stakeholders and charity organisations who have helped to make this a reality.

With the volume of work decreasing through this year, we will begin the process of removing our construction compounds and haul roads. This will include reinstating some of the works that were carried out on the public highway and importantly include repairs required to the local highway network due to the additional deterioration caused by our construction traffic.

Finally, I would like to thank everyone for their continued support and patience as we continue to deliver the project. I am aware that despite our progress, the project continues to cause disruption to the local community for which we must apologise.

Thank you for your continued support and interest in the project.

**Mark Cuzner**, Alliance Director



## Three down, two to go

Since the last issue of our newsletter, two of the five new overbridges to be built on the project have been successfully opened to the public, in addition to Charbridge Lane that was re-opened in December last year.

OXD34A Station Road near Launton opened on Saturday 12 March, allowing Station Road to re-open with a temporary 40mph speed restriction in place, which will be lifted following installation of additional crash barriers.

Towards the eastern end of the project, OXD10AA Salden Wood overbridge was opened one-week ahead of schedule on Saturday 26 March, replacing the old, narrow road bridge (OXD10), which has been demolished.

Both structures have been built utilising modern methods of construction, with many of the precast concrete components manufactured offsite to save time, improve safety and reduce disruption to the local community.

Alliance Director, Mark Cuzner commented: "The opening of these two bridges is an important milestone for the project. Not only are they two of the most significant new structures to be built, but they also provide



OXD10AA Salden Wood

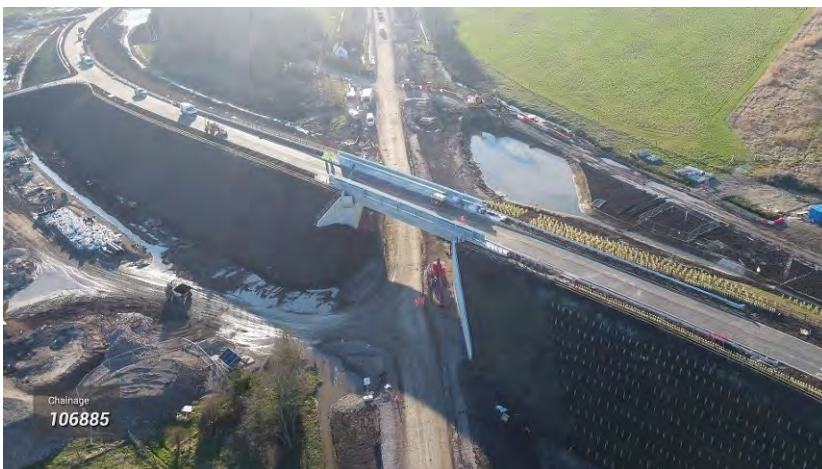
safe access over the railway for members of the public and both have also been completed on schedule, which in turn will allow our track team to start the construction of the track in these areas on programme."

OXD36AA Charbridge Lane, which opened in December is using a temporary approach road while the permanent southern embankment is completed. The bridge is due to open on its final alignment in the summer of 2022.

The Alliance has also recently opened the third of ten footbridges to be built on the project, with OXD29 Twyford Footbridge opened to the public on Friday 11 March.

Located at Twyford near Bicester, the footbridge is constructed from weatherproof, fibre reinforced polymer, which makes it easier to maintain than either steel or concrete.

The installation of the new footbridges will provide safe access over the railway for pedestrians and is aligned to Network Rail's commitment to eliminate safety risks by removing level crossings wherever possible. OXD36A Jarvis Lane footbridge opened to the public in the autumn of 2021, while OXD35A Grange Farm footbridge opened in February 2022.



Aerial view of OXD34A Station Road, Launton

## Winslow Station progress update

**Work on the new Winslow Station continues at pace, with the platforms nearing completion and construction of the main building now underway.**

The new Winslow station is located in the cutting of the original railway line and will include two platforms serving Oxford and Milton Keynes, with lift/footbridge access, waiting shelters, toilets, cycle storage, customer information systems, CCTV and a new 365 space car park. Current works include:

- Drainage and service routes – scheduled for completion this month (May) and facilitating installation of power/telecoms/signalling cables
- Platform construction - Utilising 600 pre-cast concrete units, with over 70% of platform slab installation complete on platform 1 and over 90% on platform 2, with overall platform completion again scheduled for May 2022

Commented Kevin Bell, Project Engineer for Winslow Station: “The construction of Winslow is the perfect example of the benefits of utilising pre-cast construction techniques which require no more than 24 operatives at any one time to support installation.”

Main station building works are also underway, with the installation of steelwork for the stairs and lift shaft set for the summer, footbridge spans to connect the building to the platforms in late November and highway/forecourt and station car park works taking place in early 2023. Overall construction of the station building is then scheduled for completion in spring 2023, with supporting track and signalling works running from early 2023 towards the end of the year. The new station is then scheduled to enter operational service in 2025.

In addition, and in support of the station, the project team is also set to install a new footbridge this month (May), replacing the previous structure removed in Autumn 2020 and connecting Furze Lane with the new housing estate/cycleway on the opposite side of the railway.



Winslow Station Platforms under construction in early May 2022

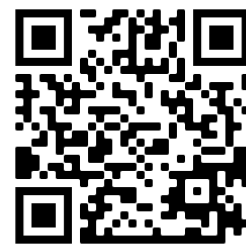
## In Focus

**Did you know we produce an electronic version of this newsletter, providing more in depth articles and interactive features?**

With the recent arrival of the New Track Construction (NTC) train seeing a change in emphasis on the project from civils to permanent way (P-way/track), in our Spring issue we take a closer look at the work of the Alliance's Track team and our strategy for installing the new railway.

In addition, you will find an in depth look at our environmental strategy, from protecting bats, badgers, trees, ancient archaeology and watercourses, to how we manage waste, how we mitigate our impact and how we are striving to delivery a 10% Biodiversity Net Gain through the delivery of the project, you can find out more about the many challenges facing the team to ensure we protect the local environment.

To read the electronic version of this newsletter, scan the QR Code:







## The move to an operational railway

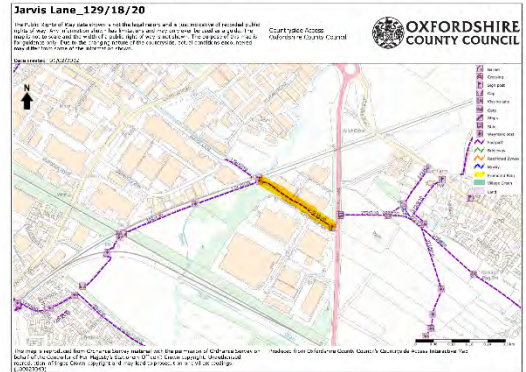
As the project emphasis switches from civils construction to track, the use of engineering trains in support of the works means many of our work sites will be classified as live rail environments. This brings with it the introduction of the following new safety measures to keep our workforce and members of the public safe:

- The installation of permanent railway boundary fencing with associated signage and security along the line of route, in advance of the track construction dates coming into effect
- All temporary land and associated boundary fencing to be restored/removed as track construction work is completed
- Installation of new permanent access points for use by Network Rail (in its role as the infrastructure owner/maintainer) after track construction is complete
- The introduction of acoustic barriers to mitigate noise from engineering trains used during the construction of the project and future train operations (where required)

These changes will remain in place through to and upon introduction of the new timetable/train services.



An engineering train on site



## Public Rights of Way re-opening schedule

We recognise that Public Rights of Way (PRoW) are an important resource for the community and seek to minimise closures of PRoWs where possible. In some instances, closures must be made to ensure public safety whilst works are undertaken, for example to divert watercourses and reroute PRoWs.

The Alliance is seeking to reopen the PRoWs affected by the project as early as possible and again make them available to the community.

We have created an interactive guide to share information regarding each of the current and future PRoW closures, including guidance indicating when the PRoW is scheduled to re-open.

To view the guide, scan the QR code below on any internet-connected mobile device:



Please note, this information is subject to change and any closures/re-openings will be notified nearer the time by the Alliance via the local authorities as necessary.

## Ongoing works and diversionary routes

As always, you will find a detailed look at recent progress and upcoming works in your area at the back of this newsletter, however, below is a high-level summary of ongoing works and diversionary routes across the project to be aware of.

### Queen Catherine Road, Steeple Claydon

- We have partially completed hedgerow clearance in this area, with a remaining section of hedgerow clearance under review with Buckinghamshire Council
- Following this review, traffic management measures will need to be put back in place to allow us to complete the remaining hedgerow clearance works.

### Overbridge OXD34, Bicester Road, Launton

- Bridge closure until the end of May 2022, with work including brickwork repairs, embankment installation featuring crash barriers/highways fencing and the resurfacing of the road over the bridge
- Restricted access - Pedestrian and cycle access will remain, but there will be no vehicle access. Diversionary routes are in place, planned in conjunction with the local authority and well signposted
- Notification – The Parish Council has been informed, with notification issued to the local community in advance of the work

### Overbridge OXD20, Furze Lane, Winslow

- Bridge closure until September 2022 facilitating the upgrade of the existing structure, including crash barrier installation
- Business continuity - Bespoke signage has been produced in conjunction with affected businesses to inform people that they remain open throughout the work
- Furze Down School – The project team will be carrying out a programme of community engagement work during the summer

### Overbridge OXD18, Buckingham Road, near Winslow Station

- Bridge upgrade works are scheduled to start in Autumn 2022
- The bridge will remain open, albeit with restricted access/traffic management in place

### Road conditions

As the seasons change, so will the conditions of the roads and the measures used by the project to manage its impact on the local highways. This will include the use of a dedicated water bowser to help reduce dust across the project footprint.

### Acoustic barriers

Helping to manage noise/disturbance from the operational railway, these have been installed at Winslow, Verney Junction and Steeple Claydon.

### Compound demobilisation/haul road reinstatement

As mentioned above, with the majority of the earthworks and civils nearing completion, the project is changing emphasis towards a railway/track project. As such, there will be a gradual demobilisation of compounds and reinstatement of haul roads, resulting in a reduction in the project's temporary footprint and the number of Alliance related vehicles using the local road network.



A steel bridge deck is lifted into place on OXD34, Bicester Road, Launton

## Alliance delivers £1m of social value

**The figures are in and it's official – the East West Rail Alliance delivered over £1m worth of Social Value during the last financial year, 2021/22\*.**

Whilst on many large-scale engineering projects the external impacts can be overlooked or overshadowed, on East West Rail Phase 2 (Bicester to Bletchley), Social Value a key requirement from project inception.

Danny Miller, the Alliance's Social Value Manager explains: "Social Value measures the full net value an organisation provides to society. This can include supporting the local economy via the retention of local labour and resources, through to promoting opportunities for disadvantaged groups and supporting charities and other community-based organisations. Put simply, for every £1 invested, how much wider value is created for society?"

With a dedicated community request process helping local people and organisations put in requests for support, the range of Social Value based initiatives delivered by the Alliance to so far is wide and varied.

The project is also well placed to meet its target of STEM (Science, Technology, Engineering and Mathematics) activity in schools. Led by Danny and Head of Engineering Assurance Chris Uren, the Alliance has already carried out over 50 engagements.

"Delivering over £1million in Social Value is a fantastic achievement, due in no small part to the efforts of everyone across the project, particularly the stakeholder management and community relations team and the 300 plus volunteers who have lent their support," says Danny.

For a summary of social value activity delivered by the Alliance since January of this year, please see the 'Leaving a Legacy' section of this newsletter.

*\*Calculated using the Rail Safety and Standards Board Common Social Impact Framework*



## 2B team achieves near perfect Considerate Constructor's Scheme score

Our 2B team (covering the western section of the project) has scored a near perfect score following the latest audit by the Considerate Constructor's Scheme (CCS).

With sections 2A (covering the eastern of the project) and 2C (our Bletchley Flyover works) site assessed last year, both scoring 'excellent,' this time around it was the turn of 2B which runs from Steeple Claydon to Bletchley.

The Alliance scored 44 out of 45 with the monitor highlighting the high standard to which the project team engaged with the community.

EWR Alliance's adherence to ISO14001, the environmental management system, was praised, referencing the project team's 'extensive systems and initiatives in place to protect and enhance the environment.'

2B's compliance with the health and safety management standard ISO45001 also earned CCS approval, with the report stating that 'the site provides an extremely high level of care and support for the workforce.'

CCS is a not-for-profit, independent organisation founded to raise standards in the construction industry. Participating companies and suppliers voluntarily register with CCS, abiding by the Code of Considerate Practice.





## Community Engagement Events

### Winslow East Resident's meeting

The beginning of April saw the Alliance field questions from the community at the latest Winslow East resident's meeting. Organised by Buckingham MP Gregg Smith, the event was supported by Alliance Deputy Director Mark James and Peter Hume and Charles Hurst from Network Rail, with the team providing an update on track construction, train operations post project completion and compensation related issues. Residents also had the opportunity to question the team, with issues ranging from noise and utility diversions being carried out by Southern Gas Network through to site management and construction traffic. There is a follow up meeting scheduled to take place 17 June at the Bell Hotel, Winslow. Please email [publicinformation@ewralliance.co.uk](mailto:publicinformation@ewralliance.co.uk) if you would like to attend.

### Forthcoming events

#### Launton FC

The Alliance has been liaising with Launton FC regarding its forthcoming football tournament to be held this month (May). With project works impacting on the event's parking arrangements, the Alliance has offered the use of the car parking facilities at its A1 compound in support of the event.

#### Open days/Drops-in events

The Alliance is holding a series of open days and drop-in events, helping to keep people informed of project progress. The events, which are open to all, are being planned in conjunction with parish councillors and community groups, with the first being held at the Claydon Estate this month (May).

#### The Big Foot Festival

Running from 17 – 19 June at the Claydon estate, the Alliance is actively engaged with event organisers regarding traffic management, helping to minimise any impact that the project may have.

#### Jubilee celebrations

The Alliance is providing support to the local community's celebrations for the Queen's Platinum Jubilee, including the provision of signage etc.



Winslow East Resident's meeting

## Training courses

The Alliance is offering a range of training courses to local groups/organisations such as Winslow Town Council, which is taking part in health and safety training for its staff. Courses include:

- Basic first aid and/or CPR and defibrillator training/resuscitation
- Nutritional information for healthy employees
- Cookery demonstrations, run over 45-minute sessions
- Mental Health talks
- External consultant John Ryan and team, who provide support across a range of topics including diet & lifestyle, drugs & alcohol, menopause, women's health and specialist courses for schools

For further information, please contact [publicinformation@ewralliance.co.uk](mailto:publicinformation@ewralliance.co.uk)



## Alliance engineer wins prestigious Young Rail Professional of the Year award



**Congratulations to EWR Alliance Section Engineer Lucy Ellis, who won the prestigious Young Rail Professional of the Year award at a ceremony in Manchester on Thursday 21 April.**

The Young Rail Professionals' event is organised in order to showcase and celebrate the achievements of young people working throughout the industry, as well as to inspire them to become the future leaders of rail.

Lucy Ellis joined EWR Alliance member Laing O'Rourke's apprenticeship scheme straight from

school in 2016 and was placed on to the EWR Alliance team in the early stages of the project's development. Quickly earning a reputation for her problem solving skills, Lucy joined the team working on the highly complex dismantling and rebuild of the Bletchley Flyover, where she quickly progressed from a site engineer to a section engineer, 18 months ahead of her progression programme.

Lucy now leads a team of 40, including apprentices and teams from three different contractors involved in the fencing and landscaping for the EWR2 project.

Passionate about promoting engineering and attracting the next generation, Lucy regularly speaks about diversity in construction and rail at industry conferences and is an active mentor and STEM ambassador involved in Go4SET and the Engineering Education Scheme.

Talking about her award Lucy said: "I am honoured to have been awarded Young Rail Professional of the Year and would like to thank the teams at Laing O'Rourke and the East West Rail Alliance for all the support I have received over the years which has enabled me to achieve this recognition. The business and project have provided me with countless opportunities to diversify my skills and have supported me every step of the way."

Commenting on Lucy's award, EWR Alliance Director Mark Cuzner said: "Lucy's proactive approach and willingness to get involved have enabled her to gain an appreciation of the whole project lifecycle, develop innovative solutions to create efficiencies and improve construction delivery. Her passion for infrastructure, the team and attracting the next generation is commendable. Lucy is a role model for the construction industry, and I'm delighted she has been recognised with this prestigious award."

## Bletchley Flyover highly commended at Rail Business Awards

**The East West Rail Alliance received high praise at the prestigious Rail Business Awards 2022, having been recognised for the successful dismantling and rebuild of Bletchley Flyover.**

The Alliance was highly commended in the Infrastructure Project Excellence award, which recognises the most successful infrastructure enhancement or station development projects, across the UK. Five projects were shortlisted with one winner and one 'highly commended' announced at Wednesday evening's awards ceremony.

Representing the Alliance at the awards were members of the 2C project team as well as Alliance Deputy Director Mark James, who said: "although disappointing not to win the award outright, we were against some excellent competition, all of whom would have been worthy winners, so to be highly commended in such a competitive category is an achievement everyone on the Alliance should be proud of."



## Leaving a legacy

**A summary of community engagement activity delivered since the last issue of our newsletter:**

### Ian returns to Brookside Primary

February saw Alliance Senior Construction Manager Ian Jolliff take a trip down memory lane, when he revisited his former school, Brookside Primary in Bicester as part of a STEM (Science/Technology/Engineering/Mathematics) initiative. Ian was helping to deliver an interactive presentation about the project alongside the Alliance's Social Value Manager Danny Miller, Ecologist Patrick Dixon and Community Liaison Advisor Buthaina Sa'id.

Commenting on his return visit, Ian said: "It was great to be back in my old primary school for the first time in over three decades. We had great interaction for our presentation and town planning workshop from all three groups, with some really imaginative input. I look forward to the next visit, which will hopefully be sooner than 30 years!"

### Collection for Ukraine

Due to the current situation in Ukraine, the Alliance's Stakeholder Engagement Admin Assistant Lina Vainore has been working with a group of Milton Keynes based volunteers, who have been delivering much needed supplies to the Polish border with Ukraine. Supported by Alliance colleagues, Lina helped organise a collection, delivering warm blankets, sleeping bags, nappies, food, warm clothing and much more to the voluntary group for onward distribution to Poland and then Ukraine.

The volunteer group have since responded to Lina and the Alliance, thanking everyone for their generosity. "It's been heart-warming to see how communities have united in efforts to support Ukraine and its people. We are so grateful to all and everyone who has come forward and offered assistance during these dark times," said the voluntary group.

### DSLX Careers Fair

Earthworks Project Manager Chris Reid and Phelim Brady of J Murphy & Sons helped give pupils an insight into the construction industry when they took part in Danetre and Southbrook Learning Village (DSLX) Academy's careers event earlier this year. Titled 'Beyond DSLX Academy Fair - Businesses, Apprenticeships, Management Trainee Programmes, Universities and Colleges,' the event saw Chris and Phelim talk to students and parents about career pathways into construction and engineering, drawing from their own experiences in the industry. They also discussed apprenticeship opportunities and what students could expect joining the industry straight from school.



Alliance team members with items donated for the Ukraine appeal

Commented Chris: "It was great to discuss with students how an interest in STEM can lead to a varied and successful career in construction and engineering. We spoke to a variety of Year 10 pupils, some who were keen to get into bricklaying and other trade apprenticeships, with others interested in becoming engineers and CAD technicians."

### Danny features in Community Impact Bucks case study

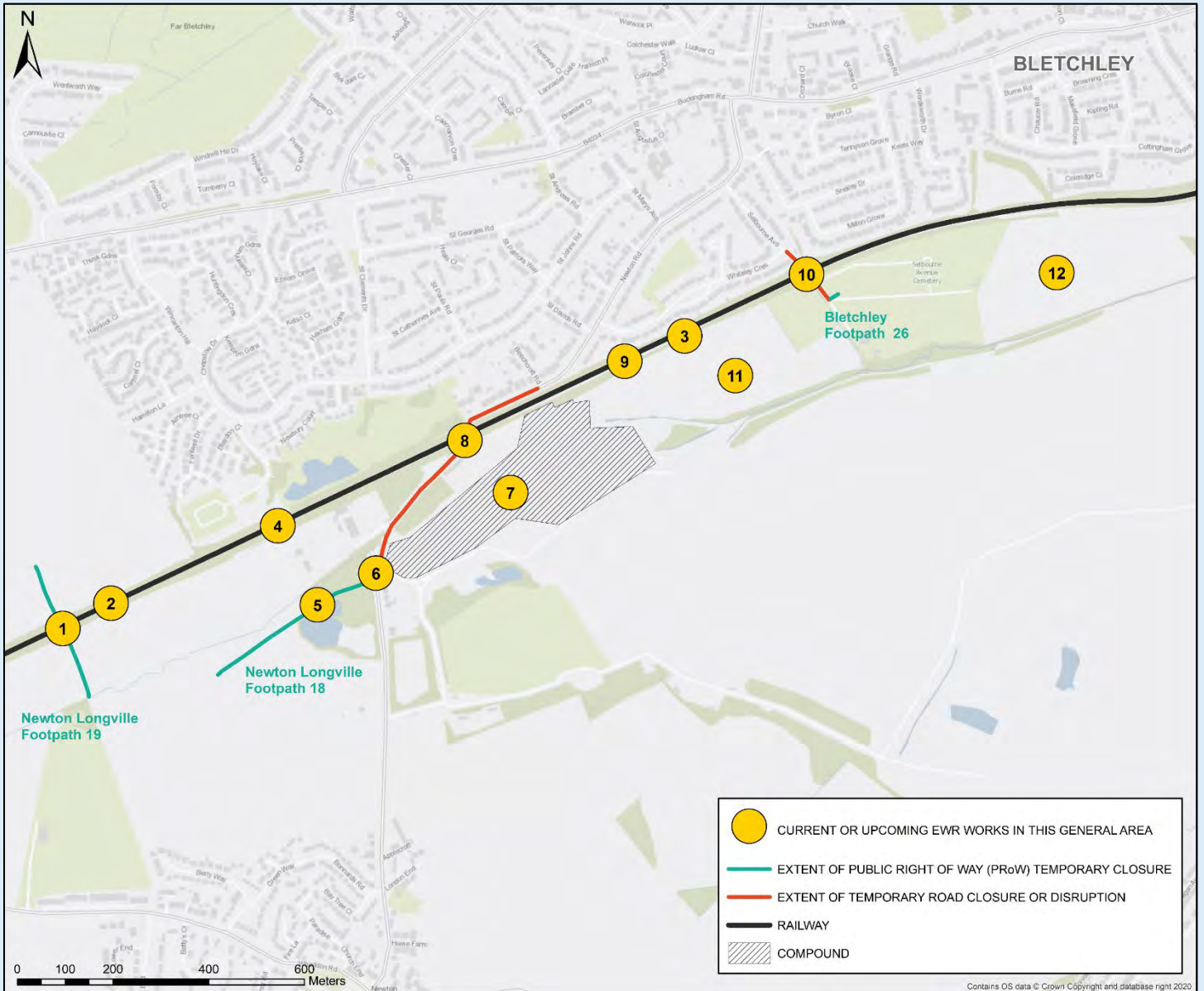
Community Impact Bucks has launched a new video case study, with a special guest appearance from the Alliance's Social Value Manager Danny Miller. The Alliance has worked with the organisation, which supports people and groups to make a difference in local Buckinghamshire communities, on several occasions, providing volunteers for gardening projects for the elderly and vulnerable. The group's latest video features a local resident who needed help to clear his garden after it had become overgrown and unmanageable when his wife fell ill. The resident, a full-time carer for his wife, talks about the huge difference having the garden back has had on their health and wellbeing.



## Progress in your area – Bletchley

The coded maps in this section mark out areas of Bletchley where we will be working. Use the numbers to find out what is happening in each area, and what activity is coming up in the next three months.

### West Bletchley



Contains OS data © Crown Copyright and database right 2020



## 1. Trenches underbridge replacement

**Description:** The existing bridge is to be demolished and replaced with a new bridge to support the new railway. We will also be diverting an existing water main.

**Duration:** Construction began in summer 2020 and is now complete.

**Disruption:** Newton Longville footpath 19 has been closed to allow the existing bridge to be demolished and the new bridge to be constructed. The footpath is also crossed by our temporary haul road between compounds, so needs to remain closed whilst the haul road is in operation in the interests of public safety.

**Recent progress:** Final finishing works have been undertaken and works to the bridge are complete.

## 2 & 3. Railway works

Earlier in the spring of 2022, we started preparing the formation for the new railway to be constructed in these areas. The formation provides the ground upon which the new railway will be installed, consisting of earthworks and drainage installation. These works are now complete in this area, and the installation of the track is has begun.

## 4. Tompkins underbridge repairs

**Description:** We will repair and strengthen the existing underbridge so that it can accommodate the new railway. Work will include brickwork repairs, replacing the parapets and new waterproofing.

**Duration:** These works are now complete.

## 5. Haul road construction

**Description:** We have constructed a new haul road which will allow us to move our construction vehicles and machinery across some of our sites which will minimise disruption to local roads. The reinstatement of the haul road to its original condition will commence in the spring of 2022.

## 6 & 7. Compound construction and access

**Description:** We have built a compound to provide site offices, welfare facilities and materials storage which will be used throughout the duration of our construction work. We have also built an access route which will enable construction traffic to get onto the new railway construction site through the compound and a new haul road connecting to our compound near Whaddon Road in Newton Longville. This will mean we can reduce the amount of construction traffic using local roads between these two areas.

**Recent progress:** The compound is fully operational and is being used to facilitate the main earthworks required in the area. The reinstatement of the compound to its original condition will begin in the summer of 2022.

## 8. Newton Road underbridge repairs

**Description:** We will refurbish the existing Newton Road underbridge. Work will include new waterproofing, brickwork repairs and deck strengthening works.

**Duration:** These works are now complete.

## 9. Cattle underbridge repairs

**Description:** We will refurbish the existing Cattle Arch underbridge. Works will include new waterproofing, brickwork repairs and installing new parapets.

**Duration:** These works are now complete.

## 10. Selbourne Avenue underbridge repairs

**Description:** The existing bridge is to be upgraded to support the new railway. The work will involve demolishing parts of the bridge, piling works to reinforce the existing structure and installing new parapets. We will also install new handrailing and waterproof the deck.

**Duration:** These works are now complete.

## 11. Compensation Flood Storage Area

**Description:** We have constructed a new compensation flood storage area (CSFA) in this area to provide alternative flood water storage areas which will protect the area from flooding as the new railway is constructed.

**Recent progress:** These works are now complete.

## 12. Environmental Compensation Site

These sites have been established to mitigate our impact on the local ecology. They include the creation of aquatic habitat features like river back waters, grasslands, scrub and woodland with specific species and features for badger, otter, reptiles, great crested newts, bats, butterflies etc.





## Progress in your area – Bletchley

The coded maps in this section mark out areas of Bletchley where we will be working. Use the numbers to find out what is happening in each area, and what activity is coming up in the next three months.

### Central Bletchley





## 1. East Water Eaton Road Compound and access point

**Description:** The East Water Eaton Road compound and access road provides us access to the East side of the West Coast Main line so we can carry out work on the Bletchley Flyover.

**Recent Progress:** We have now reinstated most of this area to its former condition with landscape planting now completed.

**Upcoming activity:** In the next three months we will remove the access gate and reinstate the lineside fencing along Water Eaton Road.

## 2. Water Eaton Road Compound

**Description:** Our Water Eaton Road Compound is located in the car park of the old Cable & Wireless building (aka Mercury House). The compound provides us with access to the West Coast Main Line and the Bletchley Flyover in order to carry out our works.

**Duration:** Once works are complete, we will reinstate the land to its former condition.

**Disruption:** The site will be used throughout our works on the Bletchley Flyover. There will be an increase in construction traffic using the compound whilst the works take place.

**Recent progress:** We have started to reinstate the Water Eaton Road compound to its former condition.

## 3. Wellington Place Compound

**Description:** Our Wellington Place compound was established in the spring of 2019 and provides site offices, staff welfare, staff parking and materials storage, as well as an access point to the Bletchley Flyover. It is the main control centre used to manage our work on the West Coast Main Line.

**Duration:** The Wellington Place Compound will remain operational until our activities are complete. We will then return the land to its former condition.

**Disruption:** Our Wellington Place compound will cause minimal disruption. EWR staff are not permitted to park on local roads, they must instead use the Wellington Place compound car park – helping us minimise disruption to the local community. Wherever possible, our staff access the Water Eaton Road compound via the access point provided by the Wellington Place compound.

## 4, 8 & 9. Bletchley Flyover refurbishment works

**Description:** One of the most significant and complex elements of the entire East West Rail Phase Two project, the upgrades we're making to the Bletchley Flyover will bring the structure up to modern standards and will ensure it is structurally sound for the next 120 years. We have carried out maintenance and repairs in various locations spanning the length of the flyover and the sections that span the West Coast Main Line and Buckingham Road have been dismantled and re-built in order to safely accommodate new, modern rail services.

**Recent Progress:** We have completed the construction of the main structural elements of the new flyover structure and we are now installing track.

**Disruption:** We continue to carry out some finishing works out of hour work when the railway is closed to traffic – as ever - if residents do experience any issues, these can be reported to our team on site, or via Network Rail's 24/7 helpline on 03457 11 41 41 [/www.networkrail.co.uk/contactus](http://www.networkrail.co.uk/contactus) or via [publicinformation@ewralliance.co.uk](mailto:publicinformation@ewralliance.co.uk)

## 5. Buckingham Road site

**Description:** Our Buckingham Road site was established in early July 2019 and was used to dismantle the sections of the flyover that span Buckingham Road and Duncombe Street. In early summer 2021, we re-opened the site and closed Buckingham Road to install the new beams needed for the new flyover structure. The main structural elements of the new flyover are now complete in this area with track construction well advanced on top of the new structure.

**Upcoming activity:** Work on this section of the flyover is nearly complete. Over the coming weeks the team will start to complete the finishing works with fencing and landscaping being completed.

## 6 & 7. Bletchley High Level Station & CEMEX area

**Description:** We are building two new high-level platforms at Bletchley Station, which will enable the station to become a stop on the East West Rail line once it's opened. The new station will be accessed via a new link bridge extension from the existing Bletchley Station platforms to the west.

**Duration:** The work in this area started in early 2021 and will run through to late 2022.

**Disruption:** There will be limited disruption to the existing station through this period, so train passengers should see limited impact.

**Recent activity:** We have completed piling the foundations for the new Bletchley Station footbridge and the installation of steelwork and precast concrete components has progressed for the station and platforms. The roofing and cladding works have also begun.

**Upcoming activity:** Construction of the main building and high-level platforms will continue until autumn 2022. The new link footbridge is due to be installed and completed by the end of the year.

## 10. Railway works

**Description:** Throughout the Bletchley Flyover works, we will be carrying out changes to the Signalling, Power & Communications (SP&C) equipment and Overhead Line Equipment (OLE) on the West Coast Main Line. Now we have completed the construction of the main structural elements of the new flyover structure, we have begun installing track. Not only will this provide the track for the new East West Rail line once it opens, it is now being used by engineering trains to deliver materials to site.

**Duration:** Installation of the track will continue into spring 2022. We will then start the installation of railway systems – signalling, power & communications systems in autumn 2022.

**Disruption:** Track installation work will involve some out of hours deliveries by train.

**Upcoming activity:** The team has installed one line of track over the new flyover which is now being used by engineering trains. Work will now continue on the second line heading from the Bletchley High Level Station area, across the flyover and into West Bletchley in 2022.





## EWR2 Earthworks Update – Spring 2022

The Alliance’s earthworks programme is now well-advanced – a critical component in the successful delivery of the project.

This involves preparing and forming the circa 1 million m3 of earthworks required for the construction of the railway infrastructure and track, for example by creating embankments, slopes and cuttings needed to facilitate the passage of trains.

The earthworks programme is being delivered by our two specialist contractors, J Murphy & Sons and Buckingham Group Contracting Ltd, who are operating out of the construction compounds we have established along the route. J Murphy & Sons (JMS) will be responsible for the delivery of the earthworks at the eastern end of the project between Bletchley and Verney Junction–whilst Buckingham Group (BGCL) are responsible for the delivery of earthworks on the western side of the project between Bicester and Verney Junction.

### Progress Update

Our earthworks contractors have handed back 21 of the 25 worksites to the Alliance, including the completion of earthworks from Bletchley flyover through to Salden Wood, which has enabled us to start the construction of track in the area on programme.

To summarise progress across our earthworks programme:

- Buckingham Group:
  - Our earthworks package at Station Road, Launton overbridge has been completed and was handed over to the highways team to progress ahead of the opening of the bridge in March 2022.
  - At Charbridge Lane overbridge, the second phase of earthworks for the structure has been completed, which involves building the embankment which will form the southern approach to the new bridge. The highway works are due to complete late spring 2022, when the bridge will open to road traffic on its new permanent road alignment. Following the opening of traffic onto the permanent southern alignment we can remove the temporary alignment on the south east side of the embankment.
  - All 8km of trackbed (the surface upon which the new track will be installed) has been completed at our Poundon/Marsh Compound and Green Lane, Twyford Compound..
  - 3km of trackbed has been installed between Queen Catherine Road and Verney Junction
  - The backfill at Queen Catherine Road overbridge and Verney Road overbridge is complete and has been handed over to our highways team.
- John Murphy & Sons:
  - All 15km of trackbed has been installed in various areas of the project in JMS’ control.
  - All of the track drainage has been installed. This will prevent the trackbed becoming waterlogged.
  - The works to demobilise earthworks operations from compounds is well underway.



Read the interactive, electronic version of this newsletter by scanning the QR Code:



## Localised Earthworks Updates

The list below provides a summary of our earthworks programme across the project:

### Charbridge Lane overbridge

**Description:** As part of our works to construct the new overbridge at Charbridge Lane, our earthworks contractor will create the bridge approach embankments and remove the temporary embankment on the south east side.

**Duration:** Late spring 2021 to summer 2022.

**Supply Chain Partner:** BGCL.

### Charbridge Lane to Station Road, Launton

**Description:** Our earthworks contractor will be widening the rail corridor, installing drainage and constructing the track bed for the new EWR2 track to be installed.

**Duration:** Earthworks in this area started in late spring 2021 and will complete in spring 2022.

**Likely disruption:** No disruption to local residents is anticipated due to works being restricted to the disused railway line. However, plant and vehicle movements will be visible from surrounding areas.

**Supply Chain Partner:** BGCL.

### Station Road overbridge, Launton

**Description:** As part of our works to construct the new bridge structure at Station Road, Launton, our earthworks contractor has completed the bridge approach embankments.

**Supply Chain Partner:** BGCL.

### East of Station Road, Launton – Station Road, Marsh Gibbon

**Description:** Our Earthworks contractor will be using the existing railway line to transport materials to be placed within Station Road overbridge, as well as widening the rail corridor, installing drainage and constructing the track bed for the new EWR2 track to be installed.

**Duration:** These works are now complete.

**Supply Chain Partner:** BGCL.

### Station Road, Marsh Gibbon to Main Street, Charndon

**Description:** Our earthworks contractor will be widening the rail corridor, installing drainage and constructing the track bed in this area.

**Duration:** These works are now complete.

**Supply Chain Partner:** BGCL.

### Queen Catherine Road overbridge

**Description:** As part of our works to construct a new bridge at Queen Catherine Road, our earthworks contractor will create the bridge approach embankments.

**Duration:** Spring 2021 – summer 2022 (Please note this is the total bridge duration, however, the earthworks is anticipated to finish sooner).

**Likely disruption:** Expected disruption to local residents will include noise, dust and vibration from plant movements and material handling. We will implement a range of control measures to minimise impacts as much as possible and our works will be discussed on a monthly basis with Buckinghamshire Council Environmental Health Consultant.

**Supply Chain Partner:** BGCL.

### Queen Catherine Road to Verney Junction

**Description:** Our Earthworks contractor will be using the existing railway line to transport materials to be placed within Queen Catherine Road overbridge as well as widening the rail corridor, installing drainage and constructing the track bed upon which the new EWR2 track will be installed.

**Duration:** Spring 2021 – summer 2022.

**Likely disruption:** Expected disruption to local residents will include noise and dust from plant movements. We will implement a range of control measures to minimise impacts as much as possible and our works will be discussed on a monthly basis with Buckinghamshire Council Environmental Health Consultant.

**Supply Chain Partner:** BGCL.

### Verney Junction overbridge north approach

**Description:** As part of our works to construct a new bridge at Verney Junction, our earthworks contractor will create the bridge approach embankments.

**Duration:** These works are now complete.

**Supply Chain Partner:** BGCL.

### Verney Junction overbridge south approach

**Description:** As part of our works to construct a new bridge at Verney Junction, our earthworks contractor will create the bridge approach embankments.

**Duration:** These works are now complete.

**Supply Chain Partner:** JMS.

### Verney Junction overbridge to Furze Lane Compound

**Description:** Earthworks in this area has already begun with the construction of the track bed that will provide the foundation for the EWR2 track to be constructed upon.

**Duration:** These works are now complete.

**Supply Chain Partner:** JMS.

### Winslow New Station to Furze Lane Compound

**Description:** Our earthworks contractor has completed the earthworks required for the construction of the new station at Winslow, however, earthworks between the new Winslow station and Furze Lane are ongoing. Our Utilities contractor has begun diverting various utilities within this area.

**Duration:** These works are now complete.

**Supply Chain Partner:** JMS.

### Furze Lane Compound to Station Road, Swanbourne Compound

**Description:** Our earthworks contractor has begun excavation and fill works within this section has removed the old Winslow Station platforms ready for the installation of the new platforms, which began in late 2021. Track bed and drainage construction will also be taking place throughout this section.

**Duration:** These works are now complete.

**Supply Chain Partner:** JMS.





## Whaddon Road, Newton Longville to Station Road, Swanbourne Compound

**Description:** Our earthworks contractor has completed the construction of the drainage and track bed works for rail corridor widening that will provide the foundation for the EWR2 track to be constructed upon.

**Duration:** Work began in spring 2021 and was completed in late autumn 2021.

**Likely disruption:** Some disruption from noise and dust is possible for the few properties in the vicinity of the Swanbourne compound, otherwise, no specific nuisances are anticipated during the construction works along the railway corridor with the exception of a small number of dwellings close to the railway. Control measures will be applied where possible to minimise impacts.

**Supply Chain Partner:** JMS.

## Whaddon Road, Newton Longville to Wellington Place Compound

**Description:** Our earthworks contractor has completed the construction of the retaining wall for embankment retention to facilitate the required track bed construction; this involves driving steel piles into the ground and placing precast concrete planks in between. Track bed construction and embankment regrading will also be taking place in this section.

**Duration:** Work began in spring 2021 and was completed in late autumn 2021.

**Likely disruption:** During piling and earthworks operations, disruption to local residents is likely to include noise, dust and vibration. We will implement a range of control measures to minimise impacts where possible and will review works regularly with Buckinghamshire and Milton Keynes Councils.

**Supply Chain Partner:** JMS.

## Wellington Place Compound to Bletchley North/Saxon Street

**Description:** Our earthworks contractor has now completed works in this area - widening the rail corridor, installing drainage, and constructing the track bed.

**Duration:** Work began in summer 2021 and was completed in autumn 2021.

**Supply Chain Partner:** JMS.

## Mitigating Disruption

To minimise disruption for local residents we have worked with our supply chain partners to plan the works with the community in mind, sequencing the works in such a way so as to reduce our impact wherever possible.

EWR Alliance Traffic Ambassadors are also monitoring our earthworks contractor's vehicles to monitor compliance and driver behaviour.

In addition:

- Our earthworks supply chain partners are utilising the network of 'haul roads' that have been constructed to allow construction traffic to move between various areas of the project without using the local road network wherever possible.
- We aim to re-use 100% of all materials on the project, meaning we are re-using excavated earth elsewhere on the project wherever possible – reducing the amount of deliveries required, reducing our use of the local road network and helping us achieve our environmental targets.
- We are using the latest, modern construction plant and machinery in order to minimise noise and idling plant.
- We are adhering to the agreed working hours (07:00 – 18:00 Monday – Friday, 07:00 – 16:00 Saturday) and will apply for Section 61 consent from Local Authorities where works are required to take place outside of these working hours. We are also meeting with the relevant Local Authorities regularly to discuss the works programme.
- We are regularly monitor dust, noise and vibration levels throughout our earthworks programme.
- Our earthworks contractors are utilising wheel washes installed at our construction compounds to reduce mud and dust deposited onto local roads.
- We will employ road sweepers to keep the local roads to and from our construction compounds clean.
- Towable bowsers and other dust suppression methods will be employed to limit the emission of dust from works activities and plant movements.

As with all our works, any road closures associated with our earthworks programme will be publicised on [one.network](#) and appropriate signage will be displayed.

If you experience any issues or would like to raise a complaint, please email [publicinformation@ewralliance.co.uk](mailto:publicinformation@ewralliance.co.uk) or, contact the Network Rail Helpline 24/7 on 0345 711 4141.



## EWR2 Highways works – Spring 2022 update

As we continue to build the new railway infrastructure, residents and local businesses will see an increase in the levels of construction traffic in the area. In addition, carrying out our work may mean there is some temporary disruption, with partial and full road closures required in some circumstances to accommodate our works and keep our workforce and the general public safe.

The list of activities below indicates where we will be carrying out highways works across the length of the project, including maps to indicate where works will be taking place.

### Notification of planned highways works

All road closures across the project are notified in advance via [one.network](#), a free platform used by local and national highways authorities to provide information on planned roadworks. User friendly and free-to-view, users can register for email alerts about upcoming roadworks affecting their area. Of course, we will continue to display physical signage in the local area to advise of upcoming works.

### Logistics management

The Alliance has appointed several Traffic Ambassadors. The Ambassadors continue to monitor the performance of the project's traffic flows and report any issues they observe in real time to our Logistics and Construction Managers for immediate action.

In addition, the Ambassadors monitor delivery vehicles to ensure they comply with requirement to display EWR2 identification, and to ensure EWR2 construction vehicles stick to the approved construction routes for the project. Finally, they monitor driving behaviours to ensure compliance with our driving policies and the expected driving behaviours.

Our ambassadors are identifiable by their hi-vis EWRA branded jackets and EWRA labelled vehicles.

**ATKINS**  
Member of the SNC-Lavalin Group



Read the interactive, electronic version of this newsletter by scanning the QR Code:







## EWR2 Highways works - east

### 1. Little Horwood Road – permanent Network Rail Access point and power connection works

**Description:** We will be removing the haul road crossing and constructing an access point to allow Network Rail to maintain the railway once it is operational.

**Duration:** Late summer 2022.

### 2. Whaddon Road, Newton Longville – accesses and utility diversions

**Description:** Permanent accesses will be constructed, and the haul road crossing will be removed once our nearby compound is demobilised.

**Duration:** Works will take place late summer to autumn 2022.

### 3. Salden Lane – Surfacing repairs & maintenance, we will surface the new structure and utility diversions over new Salden Wood overbridge.

**Description:** We completed the surfacing works on the new road bridge ahead of the structure opening to traffic in April 2022.

**Duration:** These works are now complete.

### 4. Bletchley Road – Network Rail access point

**Description:** A permanent Network Rail access point will be constructed, and the haul road crossing will be removed.

**Duration:** Autumn 2022.

### 5. Station Road Mursley – Vehicle restraint system and surfacing works

**Description:** The bridge works have now been completed. The compound access will be removed and an access point for the railway will be constructed later this year.

**Duration:** Summer 2022.

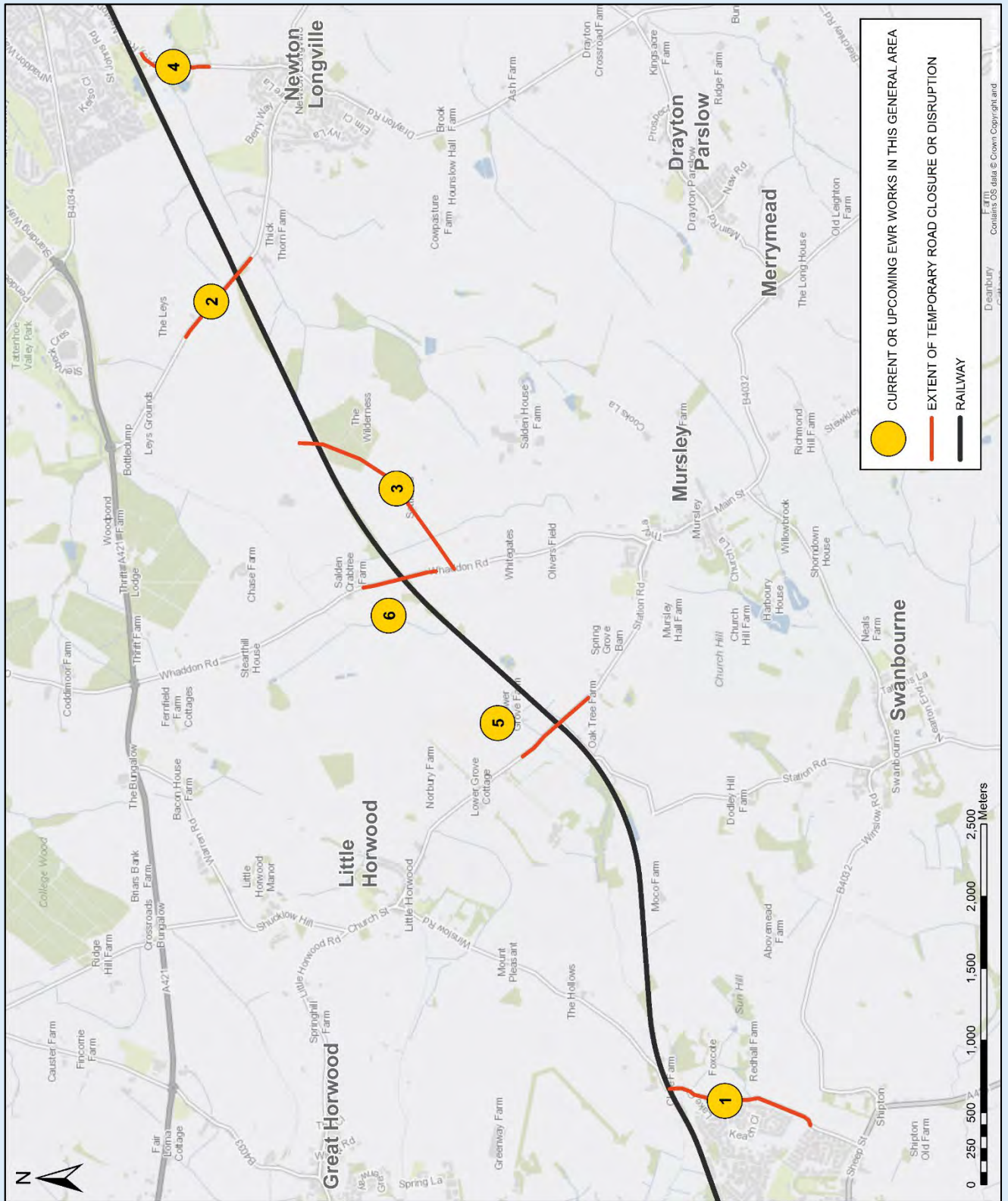
### 6. Whaddon Road, Mursley – surfacing bridge structural works

**Description:** We have completed our highways works on the Whaddon Road, Mursley bridge.

**Duration:** These works are now complete.



## EWR2 Highways works - east







## EWR2 Highways works - central

### 1. The Spinney, Steeple Claydon – junction improvement

**Description:** Work to the junction around the Spinney has been carried out to make a one-way system allowing HGV lorries to travel around the island safely and not come into conflict with other vehicles which is required to meet highways regulations.

### 2. Queen Catherine Road – surfacing of new bridge

**Description:** The new bridge on Queen Catherine Road will need surfacing and will need to be connected to the existing road. In addition, there are utility diversions required for the new bridge.

**Duration:** Surfacing and highway tie ins for new bridge – spring - summer 2022.

### 3. Sandhill Road – New surfacing over bridge and utility diversions

**Description:** The road surfacing and utility diversion works have been completed for the Sandhill Road bridge.

### 4. Verney Road –Utility connections

**Description:** We have established utility connections to the nearby EWRA compound. A tie in with the existing road for the new accommodation bridge will be completed mid-summer 2022.

Once the compound has been demobilised the access point will be removed in autumn 2022.

### 5. Furze Lane – bridge surfacing and protection works

**Description:** Once the bridge at Furze Lane is refurbished the road on top of the structure will be resurfaced.

**Duration:** Autumn 2022.

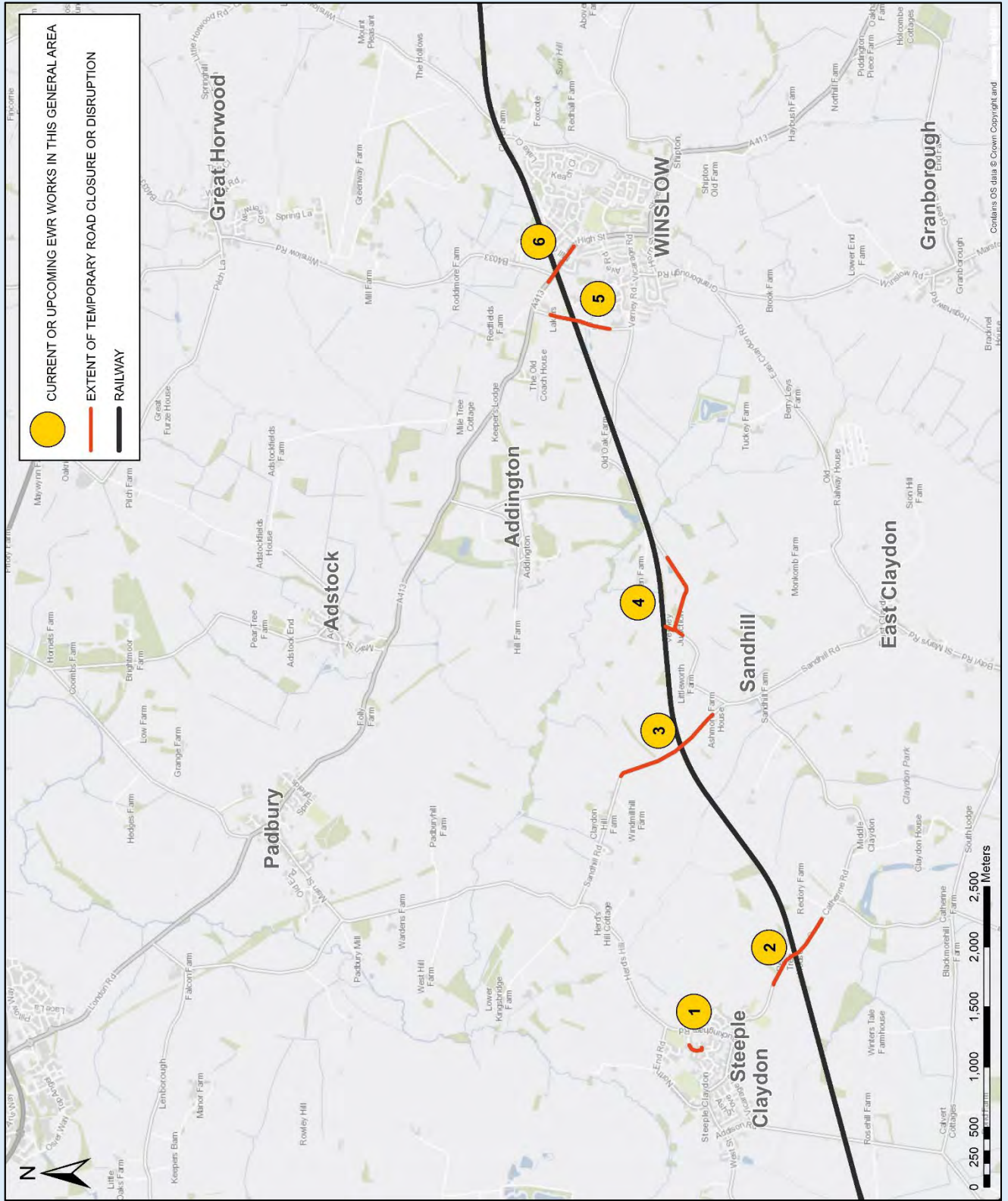
### 6. Buckingham Road – Highway/Rail Fencing Works

**Description:** A rail security fence to the north of Buckingham Road bridge will be erected.

**Duration:** Summer 2022.



## EWR2 Highways works - central



## EWR2 Highways works - west

### 1. A4421 - junction works

**Description:** Changes to the A4421 junction alignment were completed earlier in 2021.

### 2. Charbridge Lane

**Description:** One of the most significant construction activities in the area will be the new road bridge on Charbridge Lane, which is being constructed using multiple temporary road diversions to minimise disruption to the local community.

In the last few weeks, the southern approach to the structure has been completed and the the bridge opened on it's new permanent road alignment. Over the coming weeks, traffic management measures will be in place whilst we complete the installation of Vehicle Restraint Systems and complete minor finishing works.

For a full update, please see the Bicester & Launton section of the [newsletter](#).

### 3. Bicester Road, Launton – surfacing of bridge works

**Description:** Surfacing works will be required after the refurbishment works on the Bicester Road, Launton structure are complete.

### 4. Station Road crossing and overbridge, Launton

**Description:** As part of our works, the existing level crossing at Station Road will be replaced with a road bridge, providing road users with a bridge over the new railway. For more information on this, please see the Bicester & Launton section of the [newsletter](#).

**Duration:** The construction of the bridge started in summer 2020 and is still due for completion in summer of 2022.

**Disruption:** Station Road near Launton closed earlier in the year and will remain closed until spring 2022. A diversion has been put in place. Details of the closure and diversion are also available on [one.network](#).

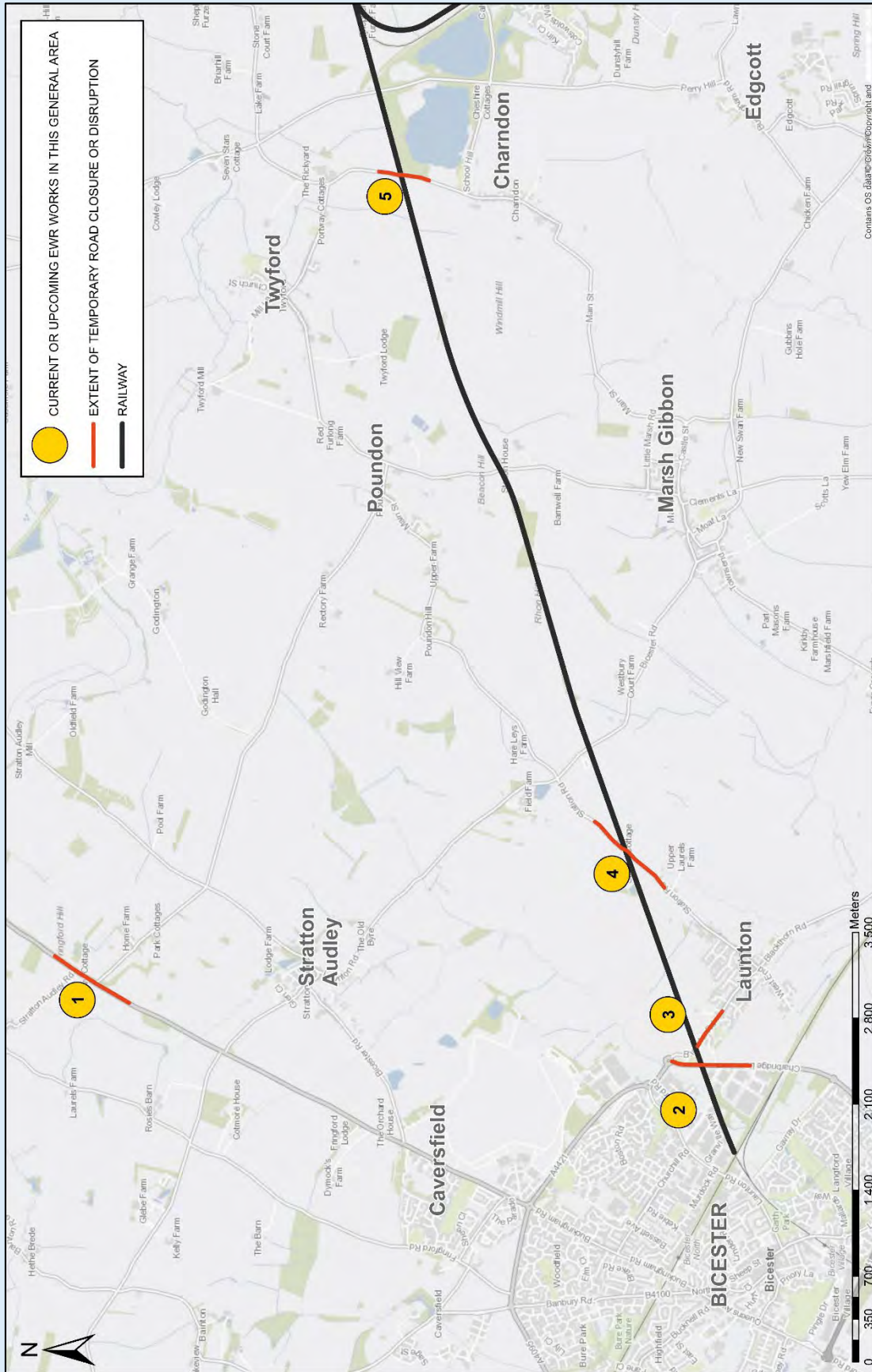
### 5. Charndon Lane – surfacing bridge works

**Description:** Surfacing have been completed at this location.





## EWR2 Highways works - west





**EWR Alliance working for Network Rail on behalf of the East West Railway Company**