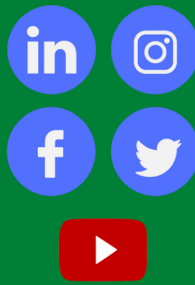


# The Neighbour

Newsletter from  
Bletchley and Fenny Stratford Town Council



## OUR FAMILY SUMMER EVENT IS BACK.



Food – Music – Live Performances – Art – Stalls –  
Circus Performance – Free Kids Entertainment –  
**Free Entry**

Plus NEW street parade featuring a **dragon**!



QUEENSWAY, MK2 2DW



29TH JULY  
12PM – 6PM

# A letter from our Chair Ethaniel

Dear Resident

I don't want to jinx it, but it feels like the summer has arrived here in Bletchley and Fenny Stratford. On a sunny day, when I am not working, or being a taxi driver/football supporter to my son. I am normally to be found on one of the many beautiful canalside pubs in our local area with my family. I am looking forward to many more days like this during the summer.

We are well and truly out of the pandemic, and it feels for many like it never happened. If I reflect on some of the good things about the pandemic, one of them was that we saw increased engagement with town council meetings as they were taking place online. Whilst the law states council decisions must be taken at in-person meetings, we want to make it easy for residents to view our meetings and address the council remotely if this is needed. I am pleased to say that the town council recently invested in hybrid meeting equipment which will allow us to do that and I hope that you will engage via our YouTube channel. We work for you and we want you to be part of all that we do.

The Bletchley Big Street Eat is back in Queensway on 29 July 2023. If you missed it last year, this is our carnival style event which celebrates the cultural diversity of Bletchley and Fenny Stratford. Queensway will be pedestrianised for the day, we will have entertainment and art, the town centre filled with street food vendors, market stalls and lots to do. Have a go for free at different art forms like graffiti, science explosions, building rockets and much more. There will also be many activities for the younger members of the community in the dedicated Kids Village at the bottom end of Queensway in Elizabeth Square. There is something for everyone and it is free entry! We will also be presenting our Pride of Bletchley & Fenny Stratford Awards on the main stage during the day. These awards recognise some of the local people and businesses that make our community a special place to be.

The community run Fenny Stratford Canal Festival will also be returning on Saturday 5 and Sunday 6 August 2023. Held on the towpath between Bridges 96 and 97 of Grand Union Canal, this will be a floating market with craft and charity stalls.

Then on Sunday 13 August 2023 the Fenny Poppers festival will be returning once again with many bands on the main stage. Bletchley and Fenny Stratford Town Council is the largest funder of this community event which we believe introduces a lot of custom to some of the great restaurants we have in the centre of Fenny.

Enjoy the rest of the summer, I am sure it will be a great one.

I look forward to seeing you soon.

Ethaniel

Councillor Ethaniel Kelly-Wilson  
Chair, Bletchley and Fenny Stratford Town Council





# Bletchley and Fenny Stratford Neighbourhood Plan Update

The Neighbourhood Plan Steering Group has made good progress over the last few months and has a new Chair, Ismail Hussein. Welcome and congratulations to Ismail. A Neighbourhood Plan is a document that gives communities direct power to develop a shared vision for their neighbourhood and shape development and growth. We are at an exciting stage in the project's development and we are looking for members of the public to help us by becoming a member of our Steering Group. This is composed of local people and businesses set up to steer the preparation of the plan and to seek the views of local people.

One member of the steering group is local resident Patrick Ormonde: "Being a long term resident of Bletchley, loving it's history, diversity and eye on the future, I believed joining the Steering Group was the best way I could support the growth, whilst safeguarding our environment for this and generations to come."

For more information on joining the Steering Group, or the Neighbourhood Plan in general, please visit our website: [www.bfsnp.org.uk](http://www.bfsnp.org.uk), email [info@bfsnp.org.uk](mailto:info@bfsnp.org.uk), or call 01908 649 469.

## Council Update - Vacancies, Meetings and Events



There are now two casual councillor vacancies, one for Eaton South ward and one for Fenny Stratford ward. You can view the vacancy notices on our website: [www.bletchleyfennystratford-tc.gov.uk](http://www.bletchleyfennystratford-tc.gov.uk)

If you are interested in becoming a councillor and would like to find out more, please contact us by calling 01908 649 469 or by emailing [info@bletchleyfennystratford-tc.gov.uk](mailto:info@bletchleyfennystratford-tc.gov.uk).

### Meeting Dates

July 2023	August 2023	September 2023
Environment and Planning Committee - Tuesday 11 July - 7.30pm  Full Council - Tuesday 25 July - 7.30pm	Community Committee - Tuesday 8 August - 7.30pm  Finance and Governance Committee - Tuesday 22 August - 7.30pm	Employment Policy Committee - Tuesday 5 September - 7.30pm  Environment and Planning Committee - Tuesday 12 September - 7.30pm  Full Council - Tuesday 26 September - 7.30pm

Meetings are taking place at Newton Leys Pavilion. More information, including the full meetings calendar, can be found on the Town Council's website: [www.bletchleyfennystratford-tc.gov.uk](http://www.bletchleyfennystratford-tc.gov.uk)

### Upcoming Events

The Bletchley Big Street Eat. Queensway. Organised by the Town Council	Fenny Stratford Canal Festival organised by the IWA Milton Keynes	Bletchley Food and Craft Market in Queensway organised by the Town Council	Halloween Event organised by the Town Council	Diwali Celebration organised by the Town Council	Christmas on Queensway organised by the Town Council
29th July noon - 6pm	5 & 6 August 2023	Saturday 23 September 2023 10am-4pm	Saturday 28 October 2023	Saturday 10 November 2023	Saturday 2 December 2023

# New Waste Collection Service from Milton Keynes City Council

## About your new waste and recycling collections

From 4 September, how we collect waste and recycling is changing as we modernise the service.

Most residents will move to wheelee bins, as preferred by three quarters of local people who responded to our consultation. However, as not everyone's property is suitable for wheelee bins, some residents will continue to use sacks or communal bins.

## When will my bins be emptied?

Weekly collections will continue for green bins, and for black bins or sacks. Blue and red bins or sacks will be collected on alternate weeks, blue one week and red the next.

We're delivering a handy calendar alongside your new bins/sacks, which is also on our website, so you always know what bin to put out when.

## Your questions answered

- When should I start using my bins or sacks?**  
Start using your new bins or sacks from 28 August and we'll start collecting them from 4 September.
- Why are there two recycling bins/sacks?**  
Separating paper/card from plastic/metals/glass will help us recycle more items, which is better for the environment. It also puts Milton Keynes ahead of expected new legislation that will eventually require all households to separate recycling into more containers.
- I've received the wrong bins/sacks, what should I do?**  
If you think we've got this wrong, please use the postcode checker to request a review at <https://tinyurl.com/Wheelie-Bins>. It may take some time for the reviews to be processed.
- What happens if my bin isn't emptied?**  
If your bin is missed, or if you have any other issues about collections, please let us know at [www.milton-keynes.gov.uk/report-it-waste](http://www.milton-keynes.gov.uk/report-it-waste)



w/c 4 September	  
w/c 11 September	  
w/c 18 September	  
w/c 25 September	  

**On collection day, please**

- Put your bin out by 7am
- Ensure the bin lid is fully closed
- Return your bins to your property once emptied

**When recycling, if in doubt, leave it out.**

Update your recycling knowledge at: [www.milton-keynes.gov.uk/recycling](http://www.milton-keynes.gov.uk/recycling)

**Can I get extra help to move my bins?**

If you have a disability or medical condition and there is nobody else in your household who can put your waste out, you may be eligible for an assisted collection (we may ask for proof of disability).

We can arrange for our collection crew to collect your bins from just outside your front door instead of the boundary.

Contact Customer Services at: [customerservices@milton-keynes.gov.uk](mailto:customerservices@milton-keynes.gov.uk) or call them on 01908 252570



KEEP IT CLEAN, KEEP IT GREEN



## Your 2023/24 waste and recycling calendar

New collection service starts from 4 September 2023

### When will my bins or sacks be emptied?

Weekly collections will continue for black and green bins.

Blue and red bins or sacks will be collected on alternate weeks, blue one week and red the next.

- ✓ The black bin is for rubbish you would usually put in your black sack
- ✓ The blue lid bin is for plastic, metal and glass
- ✓ The red lid bin is for clean, dry cardboard and paper
- ✓ The green bin is for food and garden waste

### On collection day, please...

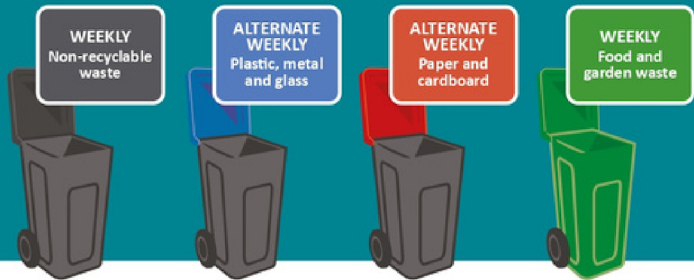
- ✓ Put your bin out by 7am
- ✓ Ensure the bin lid is fully closed
- ✓ Return your bins to your property once emptied

\* For more information on collection days over Christmas, please visit [www.milton-keynes.gov.uk/collection-days](http://www.milton-keynes.gov.uk/collection-days)

	WEEK 1				WEEK 2			
								
2023/24	WEEK COMMENCING							
Sep	4	11	18	25				
Oct	2	9	16	23	30			
Nov	6	13	20	27				
Dec	4	11	18	25*				
Jan	1*	8	15	22	29			
Feb	5	12	19	26				
Mar	4	11	18	25				
Apr	1	8	15	22	29			
May	6	13	20	27				
Jun	3	10	17	24				
Jul	1	8	15	22	29			
Aug	5	12	19	26				
Sept	2	9	16	23	30			
Oct	7	14	21	28				
Nov	4	22	18	25				
Dec	2	9	16	23*	30*			

### Do's and Don'ts

- ✓ Do put all food and garden waste in the green bin all year round
  - ✓ Do tie up all rubbish and recycling sacks
  - ✓ Do make sure recycling items are empty, clean and dry
  - ✗ Don't put your bins or sacks out earlier than 5pm the day before your collection day
  - ✗ Don't leave loose waste or sacks next to your bin as they won't be collected
  - ✗ Don't put the wrong items into your bin or sacks as they may not be collected
- When recycling... if in doubt, leave it out.**



### How can I find out more?

Scan the QR code to sign up for important news and information sent to your email.

Visit [www.milton-keynes.gov.uk/waste-recycling](http://www.milton-keynes.gov.uk/waste-recycling)

If you need extra help, please call our Customer Service team on 01908 252570.

British sign language options are available.

For more information on what goes in each bin, visit [www.milton-keynes.gov.uk/wheelie-bins](http://www.milton-keynes.gov.uk/wheelie-bins)





# A Quick Interview with Cllr Ayesha Khanom

## An Introduction About You

I am Ayesha, I've been a Cllr for Bletchley and Fenny Stratford Town Council for nearly 5 years. I was born here and went to Knowles and Leon Schools. Being from Bletchley is such a big part of me along with all my other cultural identities



## Your Priorities and Focuses

My main focuses are ensuring the people and communities around us in Bletchley and Fenny Stratford have access to the services and support they need.

That can mean anything from sitting down with someone and helping them to complete passport forms or translating letters and documents all the way to trying to find a service to support someone new to the area. Connecting people to jobs and training.

Sometimes the services simply are not available and so its my role as a councillor to see where and how I can help create positive changes.

This was such a big part of our lives during covid. Especially for the BAME and People of Colour families education on the importance of face masks and how to keep safe. Access to food and not being isolated during those uncertain times.

## Why Did You Become A Councillor?

As I look back now I realise I've always played to role of helping others in one way or another. From the age of 8 I was an interpreter for my family and community and took on a role of finding the services we needed. As a women in my culture it was important to stand up and represent for the people around me.



Image from Living Archive MK

## Do You Have A Favourite Part/Feature Of Our Area?

I spent all of my free time in the wonderful places here and have so many fond memories filled with fun and friends. Especially the Bletchley Leisure Centre!

## Tell Us Something We Might Not Know About You.

I love to travel and always end up connecting with new people. Plus I am a very proud mum. My 9yr old recently stood for his school council and won.

-seems like it runs in the family!

## Get Cycling with MK Guided Rides

Get  
Around  
MK



Gentle rides every Sunday, from 14 May to 27 August, meet at 10am. Perfect foreexploring beautiful quiet, traffic free routes around Milton Keynes. If you need access to a bike, please contact Get Around MK ([www.getaroundmk.org.uk](http://www.getaroundmk.org.uk)).

Scan the QR code below for more information and for bookings.



**Get Cycling MK Guided Rides**

Free guided rides around MK; a great way for beginners and families to get out and ride.

**MK** Milton Keynes  
City Council

# A super quick and easy recipe to help reduce food waste

Hello, I'm Sonia, after being on MasterChef and reaching the quarterfinals in 2019, I started my small business Sonia's Kitchen which I showcase on Facebook and Instagram @soniaduthiecooks.

I now mainly concentrate on providing a range of affordable personal chef services to allow others to learn about food and cooking as well as how to save money by meal planning and good kitchen organisation.



Simple store cupboard ingredients such as biscuits, custard and fruit and spreads can create a delicious and impressive dessert suitable for any dinner table or for a tasty and healthy addition to a packed lunch. Each component can be made ahead, stored in the 'fridge for a few days and layered when needed. Use any seasonal fresh, 'value' tinned or frozen fruits to keep the cost down.

One of my favourite store cupboard recipes is a **Fruit, biscuit, custard crunch layered dessert**

This recipe is based on cooked apples with added fruit but any cooked and cooled fruit or fresh uncooked fruit such as bananas or mixed berries can be used. To further reduce your costs, you could simply layer uncooked chopped biscuits, soft fruits, cold custard or yoghurt mixed with jam or other spread of your choice, just before serving. Experiment with different biscuits and fruits such as chocolate digestives with banana and salted peanuts and a swirl of Biscoff style or chocolate spread.

Why not give this a try and tag me in your posts of all your wonderful creations!

## Ingredients:

### Crunch layer:

- 100g ginger or other crunchy biscuits, such as oat biscuits or digestives, roughly crushed or chopped
- A few pecan halves, or other nuts, chopped (optional) \*TIP: for extra flavour toast lightly
- 50g butter or margarine
- 25g any sugar

Garnish: 4 pecan halves or other chopped nuts, fresh fruit or a sprig of mint

### Compote layer:

- 4 Bramley apples, peeled, cored and cut into pieces
- 2 dessert apples, peeled cored, cut into pieces or a handful of frozen berries or other fresh or tinned fruit you have
- Small handful dried fruit (optional)
- Any sugar to taste

### Custard layer:

- Any thick cold custard, made or ready made or you can even just add thick Greek yoghurt

TIP: add a swirl of honey, jam or lemon curd to the yoghurt for extra flavour

## Method:

1. Heat oven to 170C.
2. Start with the crumble and while it bakes in the oven, make the compote.
3. Melt butter or margarine in a medium pan.
4. Stir in the biscuits, ginger, nuts and sugar.
5. Spread onto a lined baking tray and bake for 10 mins. Turn the crumb and bake a further 10 mins. Cool in the tin. Once cold break into a chunky crumble.
6. Place the Bramley apples, dessert apples, spices, sugar and dried fruit along with a large splash of water into a medium pan. Stir over a low heat until the Bramley apples have softened. The dessert apples will retain their shape. If using other fruit or frozen berries add at this stage, stir and allow to warm through gently. Tip into a shallow bowl to allow to cool.
7. Layer the cold biscuit crunch, compote and custard into bowls or glasses, finishing with the biscuit crumb. Garnish with a pecan half or chopped nuts.





# Introducing Paprika Store - the Hungarian food and wine store

Paprika Store at 72 Queensway offers a vast selection of Hungarian products, ranging from smoked meats and cheeses to wines and snacks. Managing director Sabi Patai gave us some insight into the history of the company and the new shop in Bletchley. The company has been importing Hungarian goods to the UK and Ireland for 16 years and during that time it has expanded from having one shop in London to a chain of 5 outlets in the country and a logistics warehouse. As the newest addition, Paprika Stores took over the shop in March 2023 on Queensway. To make the shop more welcoming, some TLC needed so new lights, signs, a new electrical and storage system were installed. The shop manager, Gigi who is local to Bletchley, and her colleague, Anita have been working hard to ensure to create a warm inviting atmosphere.



## Diverse and multicultural location

The shop and its staff have been warmly welcomed not only among Hungarians living in the area but by the whole local community and now have a regular customer base who are interested in exploring Hungarian flavors. Queensway is a buzzing diverse shopping area and the owners believe that it is a perfectly located for an ethnic specialty food store.



## Events and initiatives

The store has many exciting plans for the summer period. One of them is having regular food & wine tasting sessions as Hungarian wines are well-known in Europe. One of the most famous wine is the unique sweet dessert wine called Tokaji Aszú made from naturally-dried, late-harvested grapes. Hungarian smoked sausages, acacia honey and ingredients for the famous Hungarian goulash soup like paprika powder are also very popular. One of the main goal is that these Hungarian delicacies will delight more locals in Bletchley and bring a taste of Hungary to the UK.

You can find Paprika Store at 72 Queensway. Open every day. Head to their website for more information: [www.paprikastore.co.uk](http://www.paprikastore.co.uk)

## Highlights from the Food and Craft Market - June 24th





# Free things to do over the summer holidays

Ready, Set, Read!, (a sports and games themed Challenge that aims to keep children's minds and bodies active over the summer break) is this year's Reading Agency Summer Reading Challenge that asks children to read at least 6 library books during the summer holidays.

Kids sign up for the challenge at your local library. You'll be given a folder to collect stickers as they read which will enable them to help our team of characters cross the obstacle course and collect the 6 golden book stickers.

After reading 6 books children are presented with (while stocks last!) a medal and a certificate of reading achievement and for 2023 children will also be presented with a copy of Rebel Girls Kick it.

Children can sign up from Friday 21st July 2023 and should complete the challenge by Saturday 9th September 2023.

They can take part at any Milton Keynes Library (remember Woughton Library is located in the Farthing Enterprise Centre in Netherfield) during staffed hours.

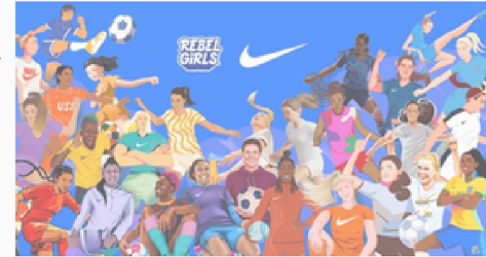
[www.summerreadingchallenge.org.uk](http://www.summerreadingchallenge.org.uk) has book recommendations, games and information for parent/carers and schools.

Summer Reading Challenge 2023

**Ready,  
Set,  
Read!**

Presented by The Reading Agency.  
Delivered in partnership with libraries.

a partnership with The Reading Agency and Nike.



Funded by the Town Council, MKPA Free Summer Sessions are taking place between 26 July to 31 August 2023 at Newton Leys, Leon Rec and the Lakes Estate. Play spaces are free but please be aware that booking via the MKPA website is essential: [www.mkpa.co.uk](http://www.mkpa.co.uk)

Lakes Estate: all 10am-12.30pm on 27 July, 3 August, 9 August 17 August, 24 August, 31 August.

Leon Rec: 10am-12.30pm on 28 July, 10am-12.30pm on 1 August, 2pm-4.30pm on 11 August, 2pm-4.30pm on 18 August, 2pm-4.30pm on 25 August, 10am-12.30pm on 30 August.

Newton Leys: 2pm-4.30pm on 27 July, 10am-12.30pm on 31 July, 2pm-4.30pm on 7 August, 10am-12.30pm on 16 August, 2pm-4.30pm on 22 August, 10am-12.30pm on 29 August.

## Win at the Big Eat!

Find all the Big Street Eat words in our crossword to be in with a chance to win a prize!

Fill in your details below and drop it into our competition box at the BFSTC tent near the main stage on July 29th.

Name:

Email Address:

Phone Number:

1. Inclusive
2. Sign Language
3. Together
4. Fun
5. Streetfood
6. Dragon
7. Graffiti
8. Art
9. Community
10. Local
11. Parade

A	I	I	C	H	F	L	A	A	T	R	F	G	A
O	D	O	O	F	T	E	E	R	T	S	E	U	U
T	F	C	G	F	U	I	R	E	G	A	L	E	N
S	I	G	N	L	A	N	G	U	A	G	E	O	A
C	O	M	M	U	N	I	T	Y	R	T	U	R	O
G	C	O	N	G	E	D	A	R	A	P	G	C	N
V	O	L	A	L	O	G	T	O	G	T	H	E	R
C	L	T	D	N	L	E	N	O	G	A	R	D	C
C	G	T	I	G	R	A	F	F	I	T	I	A	F
L	R	I	N	C	L	U	S	I	V	E	G	A	A
L	T	O	O	D	E	R	A	Y	O	E	R	I	F
O	I	P	R	N	R	U	A	E	G	T	T	E	F
U	N	S	O	V	M	A	S	F	A	D	F	A	L
E	E	H	T	E	O	F	G	T	L	A	C	O	L

Winner selected at random on Tuesday 1st August

All entries will be treated securely under GDPR guidelines.  
To opt out of marketing please tick here ( )

## PICNIC & MAIN STAGE

Enjoy your food and drinks in our semi covered seating area.

Or simply take a break and enjoy the performances on the Main Stage.

Along the route you will find food and treats from all over the world. Plus an incredible selection of handmade gifts, homeware, body care and even treats for pets.

Follow the ART **A** trail and get involved in creating your own unique pieces from the day.

Watch the parade as it performs along the whole of Queensway and back. Twice in the day.

## New KIDS VILLAGE



Have a go at

- Graffiti
- Build a rocket
- Dry Ice Demo
- Artist led Painting
- Rock garden
- Circus Performing



Yoga Trail



Face-painting

- Soft Play
- Food
- Drink
- and more...

**BLETCHLEY BIG STREET EAT**  
**SATURDAY 29TH JULY**  
**NOON TILL 6PM**

## Key

Toilets: Albert Street

Parking:

- Library (MK2 2RA)
- Leisure Centre (MK2 2FG)
- Albert Street (MK2 2UG)



# THE BIG STREET EAT RETURNS

Bletchley Big Street Eat (BBSE) is an event hosted by Bletchley and Fenny Stratford Town Council. This free to attend family event aims to celebrate the wonderful array of cultures and communities within Bletchley and Fenny Stratford.

After the success of last year, it is back and with some brilliant new features in the heart of Bletchley on Saturday 29th July from 12 noon to 6pm.

Come along to enjoy delicious food and drink, amazing live performances and handmade goods from around the world.



Spanning the length of Queensway, you'll find the main stage and semi covered seating area with lots to do on Stanier Square.

Spend time enjoying delights from one of the many stalls while being entertained by performers from around the world.



For the first time in Bletchley and Fenny Stratford Town Council events there will be a certified **British Sign Language interpreter**.

They will be supporting the Stage Compere who will be announcing the acts, parades and awards across the day.

Celebrate wonderful achievements of local residents and volunteers with the *Pride of Bletchley & Fenny Stratford Awards* being presented to the deserving winners on the day.



The street parade is even bigger this year and will walk the length of Queensway twice in the day.

Lead by a traditional dhol drummer, it will also feature **Gwynhaff the dragon**.

Along side other musicians, singers, dancers, local performers and groups from across the area.

This year's theme is **Art**, giving visitors a chance to create and express themselves as a community.

Have a go for free at different art forms like graffiti, science explosions, building rockets and much more.

There is also lots to do for the younger members of the community in the dedicated Kids Village at the bottom end of Queensway in Elizabeth Square. Suitable for toddlers and up.



If you would like to get involved as a volunteer or as part of the parade, please email [info@bletchleyfennystratford-tc.gov.uk](mailto:info@bletchleyfennystratford-tc.gov.uk)

Find out more and get all the latest updates on the BBSE Facebook page.



# Electra's coming home (after Spring maintenance)

Having carried over 4,000 guests in her first two years, Electra was ready for her Spring service. She is now back in the water, spruced-up and ready to start cruising for the rest of 2023. So, with lots of lovely summer cruises on offer, it's time to book.

Electra, the all-electric community boat, has been back to the Warwickshire boatyard where she was originally built. Over 20 maintenance items were carried out, together with enhancements to her battery and electrical management systems to keep her at the forefront of environmentally-friendly boat technology. Other works included replacing the bow thruster propeller, relaying the cabin floor and painting the hull.

After being driven 50 miles down the M1 on a low-loader, she was craned back into the Grand Union Canal at Willowbridge Marina on Stoke Road, Bletchley on Thursday morning 8th June.

Denise Taylor, Volunteer Chair of Electra's management team, said "We are delighted to welcome Electra back to Milton Keynes. She looks in such good condition, following her 'make-over' at the boatyard. The boatyard team has done a great job, as have our own volunteers, Malcolm, Stuart, Kevin and Jerry"

"Once our volunteer crew members have completed their refresher training, we are looking forward to greeting our guests on board for the rest of the season," said Sue Morrison, volunteer Lead Cabin Host. "Cruises will begin on Tuesday 27th June and bookings can be made by visiting [www.bmkwaterway.org/electra](http://www.bmkwaterway.org/electra)," she added.



Volunteer Coordinator, Gill Kirkup said, "We still have opportunities to join the team, particularly volunteers to help with shore-based roles including marketing, community engagement and training administration. If you are interested, please email me on [volunteers.electra@bmkwaterway.org](mailto:volunteers.electra@bmkwaterway.org)."

## BLECCA—LEA. Home of

## Community Space Update

What an incredible start to our project! Since we opened the shutter this April we have had roughly 1000 visitors enjoying our exhibitions, spending time chatting and making with us. Thank you so much to everyone who has visited. It has been wonderful to meet and get to know you!

So far this year we have worked with some amazing artists and members of the local community. For our inaugural exhibition Kirsten Allen worked with SOFEA to produce the incredible installation 'Clean sheet on terra firma'. Photographer Muna Ally then worked with MK College to capture the essence of our community through her portrait photography exhibition 'Souls of Bletchley'. Levi Naidu-Mitchell and Bridge Academy did a beautiful job of completely transforming our space to create the 'Angles of the Mind' Installation. Amongst our main commissions we have also had workshops with the MK International Festival and exhibitions of artists working both locally and further afield.

This July we are delighted to welcome visiting artist Patricia Valencia from Los Angeles, who has been working with three local artists to study the history of the Blue Lagoon. Please come by and experience their immersive reimagining of the Bletchley landmark! Later in the Summer we are hosting a yet to be named local artist-in-residence, who will be creating work around the theme of Fenny Stratford- please follow our socials and website to find out more!

We will be in the space every Thursday, Friday and Saturday 12-4pm and would love to see you for a cuppa and a chat. Don't forget we will always have an activity to occupy your hands and minds in the space too- so far we have done paper flower making, flower wiring, charcoal drawing and collage...there's a lot more to come!

We hope to see you soon,

Ciara and Madeleine





# Discover: Bletchley Leisure Centre

Bletchley Leisure Centre first opened in February 1973 and has been a big part of the lives of families ever since. We all have fond memories of the glass pyramid, slides and learning to swim.

Now in its updated form it continues to be a part of growing up and living in Bletchley and Fenny Stratford.

We spent time with Manager Tony to discover some of the new hidden gems available.



## Hi! Tell us a little about what's available at the leisure centre now?

What is great about the leisure centre is the wonderful balance of tradition and modern facilities. We still have the indoor bowling green, squash courts and 25m pool. Alongside a state of the art gym, sauna, steam room and our very popular virtual training gym.

We have a large range of classes to suit lots of abilities and times including dedicated SEN and accessibility sessions in the pool every week. Plus the subsidised swimming funded by Bletchley and Fenny Stratford Town Council for any one eligible in the area.

You can apply via the council website.

Not to forget about our onsite cafe. Great range of food and drink to suit kids and dietary requirements and we love when customers spend the day to work remotely from here too. A great spot for meetings and studying!

## You mentioned a virtual gym - how does that work?

The E-Gym is in a dedicated studio downstairs that has a wide range of resistance and cardio machines. It runs a personalised fully guided coaching session across the equipment. Its a brilliant way to train if you are not sure how to train or looking for something similar to having a personal trainer.

## Tell us about some hidden gems that can be found here?

We have a huge range of services. You can hire space for indoor parties or even pool parties with music and supervisors

We are the home of the talented MK Basketball team *MK Breakers*. You can come and watch games and also train with the team.

The sports hall has facilities for Basketball, football, table tennis and badminton. Plus *Crush Cheer MK* train and hold cheerleading classes on site.



## And finally, what's on over the summer?

Along side our usual timetable and sessions we are running HAFF 4 days a week for 4 weeks throughout August

There are a large number of spaces available. We have 50 spaces available per day for anyone who qualifies or for a small cost and they obviously include hot food and activities.

More information here:

<https://www.milton-keynes.gov.uk/children-young-people-and-families/holiday-activities-and-food-programme-2023>

**Plus you can find us on Queensway at the Bletchley Big Street Eat! We will be running competitions and fitness challenges across the day - so pop by to say hello on 29th July.**



# Supporting local businesses - Catching up with Beach Hut Lash Studio

Beach Hut Lash Studio is a well-established lash studio and training academy in Fenny Stratford. Tucked in a beautiful leafy road, they have quite the story. The owner and head 'lasher!' is Jodie we sat down to chat and to see what's new.

## Hi! Fab to meet you Jodie. Tell us a little about the studio.

I'm well known for my 'timing' amongst my friends and family and the journey of the studio is absolutely no different. We are a classic small business that is a victim and a success of Covid. On 11th October 2020, when lockdowns and restrictions started easing, we opened our doors in Fenny Stratford. I was thrilled to have found a gorgeous space in such a wonderful part of the town I love. Much like everyone we had hoped that the Covid fallout was easing and normality would start settling back in. However in just 18 days the restrictions hit again and we had to close for a month and then shut again by the restrictions on 18th December. We had a very long anxious wait until we could finally open mid-April the following year.

It is unbelievable to realise what we went through so early on and that we've been lucky enough to still be going strong over 2 years later.



## What a rollercoaster!

### Why were you so excited to find somewhere to open in Fenny Stratford?

I love my local area. I'm a through and through Bletchley girl. I attended Lord Grey and Milton Keynes College and have spent all my working life in the area too. To be able to contribute to the local community through providing jobs and training is so fulfilling.



## You mentioned training. Let's talk more about this.

At the studio we offer a fully accredited training and mentor program for anyone who is looking to get skilled up in the art of lashing and be self employed or run their own business doing it. I am fully registered and insured by ABT and have previously been a teacher at MK college. My journey into the beauty industry was non-traditional and so not only have I learned the skills of what I do day to day but the life skills of managing money and people and organisation plus all the business elements like marketing. The training program we offer covers all of those - not just how to do lashes.

Our trainees come from a wide range of backgrounds and so we make sure we offer solutions like Karna so you don't have to wait to start your dream. Plus many of them go on to work from the studio too.

It's a fabulous structured course, with all the kit plus a certification you can be proud of at the end.

Jodie has lots more information she can give you about the courses and treatments available. To find out more head to @beachhutlashstudio on Instagram.

Studio located at 21 Simpson Road, Fenny Stratford.

# Dave's BLINDS

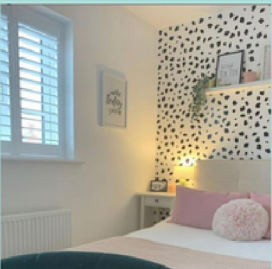
We're your local family-run business in Milton Keynes, offering a wide selection of custom blinds and shutters.

Our prices are fair and competitive, and we take pride in providing excellent quality products. Our experienced team is always ready to offer honest and professional advice.



## Showroom Now Open

21 Shirwell Crescent  
Furztown Lake  
MK4 1GA



- **Free** no obligation quotes
  - Showroom & in-home consultations
  - All products supplied & fitted
- |                 |             |
|-----------------|-------------|
| • Wood Venetian | • Verticals |
| • Shutters      | • Romans    |
| • Perfect Fits  | • Pleated   |
| • Rollers       | • Skylights |
| • Day / Night   | • Venetian  |
- 01908 502141**  
**info@davesblinds.co.uk**  
**www.davesblinds.co.uk**

**SUNDAY  
13<sup>TH</sup>  
AUGUST**

**11AM  
- 6PM**

# FENNY POPPERS FESTIVAL

**AYLESBURY STREET, FENNY STRATFORD, MK2**

# 2023

**LIVE FESTIVAL MUSIC  
& ENTERTAINMENT  
ALL DAY ON THE MAIN STAGE  
& ACOUSTIC STAGE**

**FREE ENTRY**  
**POPPER FIRED AT 2PM**  
**PICNIC LAWN**  
**FAIRGROUND**  
**STALLS**  
**FENNY POPPER**

Email stalls@fennyfestival.org.uk Web fennyfestival.org.uk FennyPoppersFestival



*The Blue Lagoon Archive*

**Patricia Valencia**  
in collaboration with TJ Watkis, Autumn Howell-Wragg & Myla Murray

**Opening: 15 July 2023, 12pm-5.30pm – film screening at 2.30pm**

*15 July 2023 – 5 August 2023*

Blecca-Lea, Brunel Centre, Bletchley, MK2 2HE

'The Blue Lagoon Archive' by Patricia Valencia in collaboration with TJ Watkis, Autumn Howell-Wragg & Myla Murray.

A part found, part imagined archival history of the Blue Lagoon.

New exhibition opens on 15th July in the Brunel Centre.

Visit for free to discover fossils and history of the Blue Lagoon



# Local Contacts and Updates



## Community Noticeboard

Your neighbourhood policing team are working on issues identified by the local community and the police.

To contact them call: 101

This is a non-emergency number

Alternatively, email them on:

[MKBletchleyCluster@thamesvalley.pnn.police.uk](mailto:MKBletchleyCluster@thamesvalley.pnn.police.uk)

[www.thamesvalley.police.uk](http://www.thamesvalley.police.uk)



### Neighbourhood Policing

Working in partnership to make our community safer

Citizens Advice MK – Free confidential advice on subjects including debt and housing  
Freephone 0808 278 7991

Age UK MK – Support for Older People -  
01908 550 700

MK Money Lifeline – Call 0300 1235 198

MK Act – Domestic Abuse Charity - 0344 375 4307

Samaritans - Mental Health Support -  
Call for Free 116 123

Carers MK - Supports the health and wellbeing of carers - 01908 231 703



## Milton Keynes City Council Ward Councillors



### Bletchley East Ward



Councillor Mohammed Khan  
email: [mohammed.khan@milton-keynes.gov.uk](mailto:mohammed.khan@milton-keynes.gov.uk)



Councillor Emily Darlington  
email: [emily.darlington@milton-keynes.gov.uk](mailto:emily.darlington@milton-keynes.gov.uk)



Councillor Ed Hume  
email: [ed.hume@milton-keynes.gov.uk](mailto:ed.hume@milton-keynes.gov.uk)

### Bletchley Park Ward



Councillor Nigel Long  
email: [nigel.long@milton-keynes.gov.uk](mailto:nigel.long@milton-keynes.gov.uk)



Councillor Waqas Ahmad  
email: [waqas.ahmad@milton-keynes.gov.uk](mailto:waqas.ahmad@milton-keynes.gov.uk)



Councillor Mohammad Imran  
email: [mo.imran@milton-keynes.gov.uk](mailto:mo.imran@milton-keynes.gov.uk)

## Local MP - Iain Stewart

Phone: 01908 686 830

Email:

[iain.stewart.mp@parliament.uk](mailto:iain.stewart.mp@parliament.uk)

Letter: Suite 102,

Milton Keynes Business Centre,  
Foxhunter Drive, Linford Wood  
MK14 6GD



# Bletchley & Fenny Stratford Town Councillors

## Newton Leys

### Chair Cllr Ethaniel Kelly-Wilson

ethaniel.kellywilson@  
cllr.bletchleyfennystratford-tc.gov.uk



### Cllr Ismail Hussein

ismail.hussein@  
cllr.bletchleyfennystratford-tc.gov.uk



### Cllr Uche Osumili

uche.osumili@  
cllr.bletchleyfennystratford-tc.gov.uk



## Central Bletchley

### Vice Chair Cllr Richard Graham

richard.graham@  
cllr.bletchleyfennystratford-tc.gov.uk



## Queensway & Denbigh North

### Cllr Ron Haine

ron.haine@  
cllr.bletchleyfennystratford-tc.gov.uk



### Cllr Shay Elhasoglu

shay.elhasoglu@  
cllr.bletchleyfennystratford-tc.gov.uk



## Manor South

### Cllr Keith Ely

keith.ely@  
cllr.bletchleyfennystratford-tc.gov.uk



### Cllr Ayesha Khanom

ayasha.khanom@  
cllr.bletchleyfennystratford-tc.gov.uk



### Cllr Terry Stephens

terry.stephens@  
cllr.bletchleyfennystratford-tc.gov.uk



## Granby

### Cllr Mohammad Imran

mohammad.imran@  
cllr.bletchleyfennystratford-tc.gov.uk



## Manor North

### Cllr Liz Campbell

liz.campbell@  
cllr.bletchleyfennystratford-tc.gov.uk



## Manor North & Eaton Leys

### Cllr Stuart Clark

stuart.clark@  
cllr.bletchleyfennystratford-tc.gov.uk



## Eaton North

### Cllr Samantha Browne

samantha.browne@  
cllr.bletchleyfennystratford-tc.gov.uk



### Cllr Andrew Palmer

andrew.palmer@  
cllr.bletchleyfennystratford-tc.gov.uk



### Cllr Ed Hume

ed.hume@  
cllr.bletchleyfennystratford-tc.gov.uk



## Fenny Stratford

### Cllr E'Amonn O'Rourke

eamonn.orourke@  
cllr.bletchleyfennystratford-tc.gov.uk



### Cllr Axel Segebrecht

axel.segebrecht@  
cllr.bletchleyfennystratford-tc.gov.uk



## Casual Vacancy

## Eaton South

### Cllr Mariee Wymer

mariee.wymer@  
cllr.bletchleyfennystratford-tc.gov.uk



### Cllr Gavin Bedford

gavin.bedford@  
cllr.bletchleyfennystratford-tc.gov.uk



## Casual Vacancy

## Contact Us

Phone 01908 649 469

Website: [www.bletchleyfennystratford-tc.gov.uk](http://www.bletchleyfennystratford-tc.gov.uk)

Email: [info@bletchleyfennystratford-tc.gov.uk](mailto:info@bletchleyfennystratford-tc.gov.uk)

The Town Council's main office is based at Sycamore House, Drayton Road, Water Eaton, Bletchley, MK2 3RR  
These offices are currently open to the public between 9am-1pm on Mondays and 9am-4pm on other weekdays.

The best way to keep up to date is by following us on our social media channels.



Please recycle me when you've finished reading