

The Neighbour

Newsletter from
Bletchley and Fenny Stratford Town Council



**Wishing all residents
a Happy New Year!**



LOOK INSIDE

Page 3: Meet Our New Councillors

Page 6: Cost of Living Support
and Winter Plan

Page 13: Latest Update on the Town Deal

A letter from our Chair Ethaniel

Dear Resident,

A big warm welcome to 2024, I wish you a happy and prosperous new year. Whether you celebrate Christmas or another winter festivity, I hope you had a wonderful and restful break and time spent with family over the winter period. For me, that is the real present of Christmas.

A big thank you to those of you that completed your recent resident survey. It was very clear that the majority of local residents want us to continue much needed services to our local community. We look forward to continuing to deliver for you in 2024.

I would like to take this opportunity to welcome two new Councillors to the Town Council. Othelia Fernandes joins us to represent Fenny Stratford and Dr Jay Joshi will represent Queensway & Denbigh North. Our council has recently grown, and we still have some councillor roles to fill, so if you would like to work with us to help shape an even brighter Bletchley and Fenny Stratford then get in touch!

We have some fantastic community events planned for 2024, and you'll find them all listed on our website at www.bletchleyfennystratford-tc.gov.uk/events. I am really looking forward to our very first Community Iftar which will celebrate the end of Ramadan on 16 March at Palatial Hall in Stanier Square, Bletchley. This event is for people from all faiths (or no faith) to come together during Ramadan to break their fast and create spaces of mutual dialogue, engagement, and exchange. A couple of weeks later, we will be celebrating Easter and that will be a chance to experience our selection of Afternoon Tea, arts, crafts and a visit from the Easter Bunny!

We are here to serve you, please do get in touch with me, your local Councillor or any member of our staff team if you have any comments or suggestions.

I look forward to seeing you at one of our events.

Best wishes

Ethaniel



Councillor Ethaniel Kelly-Wilson
Chair of Bletchley and Fenny Stratford Town Council

Council Meeting Dates



Finance & Governance Committee - Tuesday 9 January - 7.30pm
Environment & Planning Committee - Tuesday 16 January - 7.30pm
Full Council (Precept) - Tuesday 30 January - 7.30pm

Community Committee - Tuesday 13 February - 7.30pm
Finance & Governance Committee - Tuesday 27 February - 7.30pm

Environment & Planning Committee - Tuesday 19 March - 7.30pm

Full Council - Tuesday 2 April - 7.30pm

Meet our new Councillors

Jay Joshi - Queensway and Denbigh North

About Me

I am honoured to be a councillor for Bletchley, having worked as a dentist for the past 7 years at Milton Keynes Dental Clinic in Bletchley.

My Priorities and Focuses

I see patients from all walks of life some who love to discuss the history and prevalent issues that they face within the community. This has allowed me to gain a profound understanding of the unique challenges and opportunities that we as a community face.



Why Did I Become A Councillor?

I wanted to become a councillor so that I could make positive changes within the community.

My priorities include housing, community safety, environmental protection and making a tangible, positive impact on the lives of our residents.

As I take on this role as councillor, I am committed to championing these priorities for the betterment of our community.

I am confident that, together, we can chart a course toward growth and success while honouring our rich heritage and working towards a bright future. I am eager to roll up my sleeves, listen to your voices, and diligently work towards the advancement of Bletchley.

Othelia Fernandes - Fenny Stratford

About Me

My name is Othelia Fernandes, residing in Bletchley and in Milton Keynes for the last 4 years.

I have been co-opted as the Councillor for Bletchley and Fenny Stratford Town Council.

Holding a post graduate qualification and over 25 years of professional work experience diversified into Management, Operations and Manufacturing linked to the community, I would like to invest my expertise, knowledge, skills and services for the benefit of the community.



My Priorities and Focuses

My main focus is to prioritize the well-being, safety and needs of the people in the community. There is a lot that can be improved to help the community through different services, resulting in a positive overall change in the community.

In today's highly economically challenging environment, the community needs help and guidance to help sustain their needs towards their safe well-being.

Why Did I Become A Councillor?

Being a people oriented person, I have always wanted to share my experience and skills to guide and help people, care for their well-being and safety. The smallest of actions towards humanity has the greatest of effects resulting in a positive impact. We should all work towards making a change to help live in a better, safe and connected community.

READY TO MAKE A CHANGE IN YOUR COMMUNITY?

- Are you passionate about Bletchley and Fenny Stratford?
- Do you have concerns about a specific issue?
- Do you have ideas about how the town council could do better job?

If this is you, we want you! The town council has three vacancies for the remainder of the current council term (from now until May 2025). You don't need to be politically motivated, you just need to care about the well-being of the community. We need people of all backgrounds and experiences to put themselves forward for these interesting roles.

To find out more please check out our website
<https://www.bletchleyfennystratford-tc.gov.uk/become-a-councillor>
or ring Delia Shephard, Town Clerk on 01908 649469 for an informal, no obligations chat.



Neighbourhood Plan

Neighbourhood Plan Progressing: Your Input Needed for Draft Policies

In an exciting update for our community, we're thrilled to announce that the neighbourhood plan is making significant strides forward.

The success of our neighbourhood plan relies on the active participation of every resident. To ensure that the draft emerging policies align with the collective vision of our community, we are gearing up for a community consultation phase due to take place at the end of January 2024. This is a valuable opportunity for every resident to have their say, provide feedback, and influence the finalisation of these policies.

How You Can Get Involved:

- Stay Informed: Keep an eye on local communications channels, community notice boards, and the neighbourhood plan website for updates on the consultation process.
- Attend Consultation Events: Participate in community consultation events where you can directly engage with the Neighbourhood planning team, ask questions, and share your thoughts.
- Submit Feedback: Whether online or in person, take the time to submit your feedback on the emerging policies.

To view the Neighbourhood Plan please visit: <https://www.bfsnp.org.uk/>

Upcoming Events

COMMUNITY IFTAR



Celebrating Ramadan together

IFTAR IS AN EVENING MEAL WHERE THOSE OBSERVING RAMADAN END THEIR DAILY FASTING.

THE COMMUNITY IFTAR IS OPEN TO EVERYONE IN THE COMMUNITY TO ATTEND - FROM ANY FAITH OR NO FAITH

**YOU ARE CORDIALLY INVITED
TO JOIN US IN BREAKING FAST
TOGETHER.**

- 16TH MARCH 2024
- FROM 6PM
- BLETCHLEY

Dates (fruit) have a spiritual significance and are often the preferred way to break a fast



Easter on Stanier Square

Easter on Stanier Square will be on Saturday 30th March 2024, there will be more details posted on our social media platforms about this event within the next few weeks.



Cost of Living Support and Winter Plan

Winter can be a difficult time for many residents and both Milton Keynes City Council and Bletchley and Fenny Stratford Town Council are committed to doing all we can to help.

As last year the town council will be providing a programme of warm space activities for local residents between January and March. The activities will include Movie Mondays, Wednesday Bruch and Family Bingo and Games Nights. All the details are on our Facebook and Instagram pages, our website and our notice boards and are open to everyone.

We will also be providing local money advice sessions and can signpost residents who have other needs towards local support.

Please ring us on 01908 649469 if you would like more information or call into our office for printed details.



The city council offers a wide range of support open to all residents of Milton Keynes. Please visit the following link to view details
<https://www.milton-keynes.gov.uk/benefits/cost-living-support>

You may be eligible for help with essential bills or with other benefits. It is best to ask for help early before you get into debt. For free and confidential guidance about benefits, debt and everyday money management you can also visit www.moneyhelper.org.uk



Housewarming Sessions

The Housewarming MK project is designed to give interested home owners in Milton Keynes an understanding of how they can make their home more energy efficient.

The Housewarming MK programme is a series of 7 free fortnightly evening meetings taking place at Bletchley Library, Westfield Road, Bletchley, Milton Keynes MK2 2RA from 17th January 2024.



The purpose of the sessions to help homeowners keen to upgrade their homes to better understand each of the core retrofit areas in turn. The programme is wholly independent and does not recommend or sell any specific products. It assumes the homeowner is likely to be using contractors to deliver the retrofit work but is keen to develop their own knowledge and understanding.

Each session will be a combination of presentation and group discussion and will focus on one of the core home retrofit areas. The series will be based on the Housewarming Guides written by independent experts and produced by Low Carbon Oxford North.

Book your place now on <https://homenergymk.org/housewarming-mk/>

Newsletter dates for 2024

Alongside our quarterly newsletter, The Neighbour, we send out our monthly e-newsletter (which you can subscribe to via our website).

If you would like to share an update about local events or feature in either The Neighbour newsletter or our e-newsletter, please contact info@bletchleyfennystratford-tc.gov.uk

Delivery Date
January 2024
April 2024
July 2024
October 2024

ISSUE 11 AUTUMN 2023

The Neighbour

Newsletter from
Bletchley and Fenny Stratford Town Council



PAGE 1



Advertising in our newsletter



We will now be including two advertisement pages in our quarterly newsletter. We deliver our newsletter to over 8000 households.

The cost charges for advertisements are the following:

Full page advertisement - £195.60

Half page advertisement - £97.90

Quarter page advertisement - £53.50

Please note all prices include VAT.

There will be space for two pages of advertising in each newsletter, with up to one page available for commercial advertising and up to one page for community and/or charity advertising.

Non-profit organisations, supported by a copy of their constitution/rules plus a set of accounts, and registered charities may qualify for free advertising but this is not guaranteed.

Advertisers from within Bletchley and Fenny Stratford will receive priority and the editor's decision on advertising inclusion will be final.

If you would like to advertise in the next edition of The Neighbour or to find out more, then please do contact us by emailing info@bletchleyfennystratford-tc.gov.uk or calling 01908 649 469.

There is more information on our website: www.bletchleyfennystratford-tc.gov.uk

ISSUE 11 AUTUMN 2023

The Neighbour

Newsletter from
Bletchley and Fenny Stratford Town Council



Bletchley Landfill Site Update

Bletchley and Fenny Stratford Town Council are in regular contact with Bletchley Landfill.

Works have been ongoing to place engineered plastic capping over areas that have been landfilled to appropriate current, but not final, levels. Since September over 60,000m² of plastic capping has been placed and new gas wells have been fitted. These works are the appropriate measures to minimise potential odour and manage landfill gas.

The area of current landfilling has now moved to a more central location on the site.

Daily on site odour checks and gas monitoring continue to be carried out as routine, and the odour suppression system that extends the full length of the operational site adjacent to Newton Leys remains fully operational. We also routinely monitor off site as well.

We update the Environment Agency on a regular basis with all work being undertaken on site. We also held an on-site meeting with Ed Hume (Milton Keynes Councillor) on 1st December to update him on ongoing works.

We have a Community Liaison Group that meets regularly and you are welcome to join to find out more about us as the representatives of the local residents. Please register your interest via info@fccenvironment.co.uk

Please use the contact details of the Environment Agency to raise any further reports or concerns: free 24 hour incident hotline number: 0800 807060

The Site Team
FCC Environment

Bletchley and Fenny Stratford Green Gym



The Green Team are now half way through completing our slab pathway to improve access!

We had a few cold mornings with a thick white frost covering the allotment. Fortunately all our jobs this involved a good deal of physical exercise to get the circulation going!

Our community supervisor (local Robin) was present to inspect progress as always and even managed to get his own biscuit at tea break!

The team worked really hard to barrow and rake out a large pile of bark mulch, kindly donated by our friends at Bletchley and Fenny Stratford Town Council.

This helps to suppress unwanted weeds and all the paths benefit from a good topping up every winter.

Expert level groundwork in action. The results speak for themselves and it really is wonderful to watch this area developing to plan thanks to the dedication of our brilliant team.



Bletchley and Fenny Stratford Landscaping Progress Report



In September 2023 the town council took over direct delivery of soft landscaping services in our area. The city council gives us a grant to do this and we top this up from our own funds so we can deliver to a better standard. Our vision is to improve the quality of the landscape in Bletchley and Fenny Stratford and to provide a local and prompt response to residents' landscaping concerns.

There had been four cuts of the amenity grass in 2023 before we took over and we managed to squeeze in a further three cuts before the ground conditions were too soft to continue mowing in late October.

We hired in a large tractor with side arm flail for a period of 3 weeks and a smaller compact tractor with side arm flail for a further 2 weeks. This enabled us to cut hedges across our area. You may have noticed that sometimes we have taken these lower than in recent years. This is because many had received minimal reduction in recent years and had grown way beyond the intended height and thickness. By reducing the height we have brought several hedges down to a more manageable size.

In addition to the amenity grass we have cut areas of rough and meadow grass such as those at Saffron Gardens and alongside the railway on Drayton Road. We have also cut back the banks along the Water Eaton brook and recently procured a bank mower that will enable us to keep these banks cut throughout the mowing season rather than once a year.

After the mowing and larger scale hedge maintenance work was completed we moved onto the winter works programme which is currently being delivered. This includes shrub bed maintenance, encroachment pruning and crown lifting of trees which obstruct footways or make mowing difficult in the summer. Mowing will start again from March/April depending on the weather.

Although there is much to do long term to recover the overall quality of the landscape across Bletchley and Fenny Stratford we have made a good start and received lots of positive support from residents. Please look out for the team in your area over the winter. Share your feedback and let us know if you have any questions or think we've missed anything through our web app or by ringing us.



Town council works include:

- Grass Cutting
- Hedge Maintenance
- Shrub Maintenance
- Trees – only low branches that can be reached from the ground
- Landscape Maintenance within town council managed allotment sites
- Maintenance of pitches at Newton Leys Pavilion

Please report here <https://www.bletchleyfennystratford-tc.gov.uk/landscaping-services> or ring 01908 649469.

City council works include:

- All landscape maintenance within the areas of the Lakes estate designated for regeneration (if you are unsure, please get in touch)
- Weed growth on roadsides, pathways or areas of hard standing
- Trees – anything that cannot be reached from the ground and including the trunk of the tree itself and fallen trees

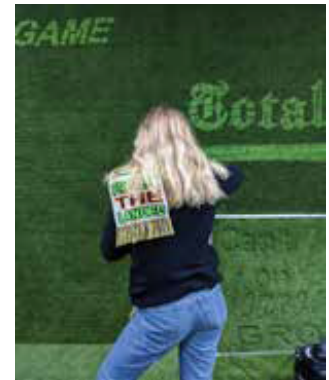
Please report here <https://mycouncil.milton-keynes.gov.uk/MyServices>



Blecca-Lea

Blecca-Lea, a year long public art commission in The Brunel Centre, Bletchley drew to a close in December 2023.

Blecca-Lea has taken form as an ever evolving exhibition and project space inviting the communities of Bletchley, Fenny Stratford and beyond to visit, experience, play and reflect on a series of commissions by women artists. We have had a wonderful time curating this space and welcoming members of the public, local and international artists and young people from schools, colleges and alternative provisions.



Here is a little look back at the year we have had!

Our exhibitions have been;

Clean sheet on Terra Firma Kirsten Allen with SOFEA
Souls of Bletchley Muna Ally with MK College
Angles of the mind Levi Naidu-Mitchell with The Bridge Academy
Reacting to Alice Boland-Rhodes with The Bridge Academy
The Blue Lagoon Archive Patricia Valencia with Autumn Howell, Tj Watkis, Myla Murray
Nowhere to meet boys in Bletchley, Group Show
Relics of Magiovinium Katie Fields with community
Final Kiss Madeleine Wilkie
Never Give Up/ Together we win Elsie Bryant with MK Internazionale
Home Lesley Asare with ARioT and local artists

We have loved meeting you all as you have visited, shared your thoughts, engaged in workshops and enjoyed our opening events.

Ciara and Madeleine

We have had pop up shows by Richard Harrison, Katherine Green, Jane Charles, Lord Grey School, Talent Unlimited, Sabre Majid, Roisin Callaghan and workshops by Ciara Callaghan, Emi Fujisawa and Rebecca Louise Law.

Newton Leys Pavilion

Newton Leys Pavilion (Furzey Way, Newton Leys, MK3 5SP), is a community facility including a community hall, sports hall and meeting rooms. This is the ideal location for birthday parties, baby showers, as well as meetings and classes.

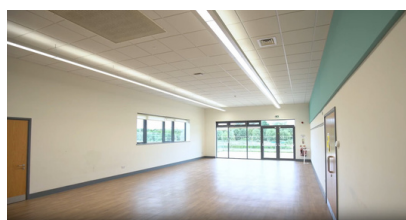
If you are interested in viewing Newton Leys Pavilion or finding out more, please contact 01908 735035 or email bookings@bletchleyfennystratford-tc.gov.uk

For more information please visit:

<https://www.bletchleyfennystratford-tc.gov.uk/newton-leys-pavilion>



Meeting Room



Community Hall



Counselling Room



Sports Hall

Fenny Stratford Community Centre

Fenny Stratford Community Centre (13 George Street, Fenny Stratford, MK2 2NR), is a community facility including two halls for hire. It is perfect for meetings, classes and community activities.

If you are interested in viewing Fenny Stratford Community Centre or finding out more, please contact 01908 649469 or email bookings@bletchleyfennystratford-tc.gov.uk

For more information please visit:

<https://www.bletchleyfennystratford-tc.gov.uk/fenny-stratford-community-centre>



Main Hall



Bowden Room



Town Council Response to Milton Keynes City Council's public consultation on the draft Brunel Centre Development Brief, 2023

Bletchley and Fenny Stratford Town Council welcomed representatives from Milton Keynes City Council (MKCC) and Milton Keynes Development Partnership (MKDP) to an extraordinary meeting of the town council which took place on 21 November 2023. The meeting was also attended by a large number of interested residents and included a presentation about the proposed development brief and its implications.

The development brief is based on the Central Bletchley Urban Framework Specific Planning Document (SPD) which forms part of the local plan and covers the Brunel site, the former Sainsbury's store and car park site and the former Wilko site. The town council is very supportive of the SPD and its aspirations for the town. The town council provided a detailed response to the development brief which included points in support as well as expressions of concern about aspects of the brief. This can be found on our website at: <https://www.bletchleyfennystratford-tc.gov.uk/>

The consultation period for the brief was extended to the end of December 2023 a decision about the adoption of the final brief is expected in the new year. Once the brief is adopted MKDP will seek developers for the site and planning applications should follow. The earliest we are likely to see new development on the Brunel site is in 2026 though demolition of the former Sainsburys building is scheduled for early 2024.



Community Grant

We work in partnership with local residents to support community action and services which contribute to local well-being. As well as helping with community spaces and buildings, staff expertise and publicity, we can also provide community grants to local organisations.

Applications for community grants are invited all year round and details of our grant criteria can be found in the application form on our website: <https://www.bletchleyfennystratford-tc.gov.uk/community-grants>

However, we encourage all applicants to contact us by phone first and talk to an officer so that we can help with the process. Please contact our office on 01908 649469 for an initial conversation.

Milton Keynes City Council are continuing to make great progress in the delivery of their £22.7 million Town Deal regeneration programme, funded via the Government's Towns Fund. The purpose of this fund is to regenerate towns and deliver long-term economic and productivity growth and will help enable Bletchley to capitalise on the emerging opportunities presented by the development of the Oxford to Cambridge East-West rail link.

In October, this fund alongside funding secured by the Bletchley Park Trust, saw the regeneration and opening of a significant wartime building (Block E). This project is now being used as a dedicated learning facility, working with local schools and the community to deliver educational workshops, events and enhance the academic reputation for the Trust.

In November, sections 3 and 4 of the Blue Lagoon Redway project were officially opened. These two sections provide 900m of new Redways, running between the Blue Lagoon Nature Reserve and Water Eaton Road. Improvement works have also been carried out to the Blue Lagoon Nature Reserve car park. The next phase of improvements is underway between the Blue Lagoon Nature Reserve and Newton Leys Development and delivery is expected in the new-year.

The programme has also been consulting on the draft Brunel Centre redevelopment brief. The Draft Development Brief for the Brunel Centre will be used to help inform the future use and design for the site. The site includes the Brunel Centre, the former Sainsbury's, Wilko and Stanier Square. The consultation for this has now been extended to the 31st of December and a public walk-in session has been arranged on the 18th of December at Duncombe Street Community House, 18:00 to 20:00. Please pop down if you have any questions.

The Council are continuing to develop several future schemes, including the Public Realm Improvement project, which will seek to positively transform Queensway and Aylesbury Street. The Council are looking forward to engaging with the community next year to help understand the opportunities this project could bring and help inform scheme designs.

If you have any questions on the Town Deal programme, then please contact the team by emailing:
info@groundbreakingbletchleyandfenny.co.uk

Alan Turing Art Commission

Milton Keynes City Council and partners have announced artists shortlisted to create a new public art commission as a tribute to Alan Turing, in Bletchley.

The shortlisted artists have developed proposals for a permanent public art commission which tells the story of Alan Turing, widely considered to be the father of theoretical computer science and artificial intelligence; and is specific to Bletchley as a place and its community.

The artists shortlisted for the
Alan Turing Public Art Commission are:

AFFECT LAB
www.affectlab.org

Mediale with Matthew Rosier
www.mediale.org.uk

Nick Ryan
www.nickryanmusic.com



The Blue Lagoon

Visitors to the Blue Lagoon will see a huge improvement following a range of activities throughout 2023.

In the summer MK City Council and Bletchley and Fenny Stratford Town Council hosted a fun Blue Light event at the lagoon with a serious safety message. They were joined by Bucks Fire and Rescue and Thames Valley Police and the local community.

Water safety is a key message the emergency services communicate all year, but especially in summer so it was important to teach the local visitors how to use a throwline in case they see someone in trouble in the water.

Two water safety throw lines were installed this summer by the main water areas with instructions.

Sadly, not all visitors to the area respect the local environment and some anti-social behaviour including fly tipping and littering have created their own challenges for both the Council and the volunteers who work tirelessly to keep the area safe.

Cameras on site are helping to capture any anti-social behaviour and identify the offenders and any footage can be passed to the police to assist with prosecutions. Regular security patrols also support keeping the area family friendly and to deter offenders.

Continuing into the new year, the redway works to link Guernsey Road and Drayton Road car park will complete in spring with the red asphalt topping finishing the newest addition to the city's network. The section between Drayton Road car park and Water Eaton Road is already open allowing cyclists and pedestrians to travel between the two, stopping off at one of the two new benches if they want to pause and take in the surroundings.

Ecology has been a key factor in this project from the start including extensive works for newt protection and low-level lighting so prevent the bats from being disturbed. A badger sett delayed the start of some work as all works are environmentally sensitive.

The Blue Lagoon benefits from an army of volunteers who help to keep the area clean, tidy and safe for all users. They now have their own repurposed toolbox to store their equipment and a new area created for the new 'MetroSTOR' bin that houses three Eurobins and means there are no longer piles of rubbish deposited around the nature reserve.

The Geocachers have also contributed to improvement works, sprucing up the picnic tables and main car park sign.

A huge thank you to all our volunteers, they help to keep the nature reserve a beautiful, safe space for all to enjoy.





NEIGHBOURHOOD WATCH

Top 5 reasons to join

1

Get local **Police Alerts** via email. **Alerts** are official, accurate and timely, and include updates about criminal activities in your area. You can reply directly back to the author of an Alert. **Alerts** can also include crime prevention tips and valuable advice to protect you, your family and your belongings. Note: **Alerts** are not mis-information sometimes generated by social media.

2

Join a **Neighbourhood Watch scheme** near you. Use the website's postcode search **Find my local scheme**. If nothing near you, apply to start one up and we can help.

Registered **schemes** have access to **FREE** Neighbourhood Watch stickers, leaflets, crime prevention information and hi-viz street-signs. They help act as a deterrent to crime and anti-social behaviour.

3

Being neighbourly is a good way to look out for each other. **Scheme** members can feel more secure and safe, for a better quality of life. These factors play an important part in building safer communities.

4

Schemes and members build direct links with their local **Police** team and help identify local crime and anti-social behaviour. Having confidence and reporting direct to the **Police** is encouraged.

5

Insurance companies and suppliers of locks and crime prevention equipment welcome membership of **Neighbourhood Watch**. **Discounts** may apply.



JOIN

ourwatch.org.uk

Make this a better place to live. Together

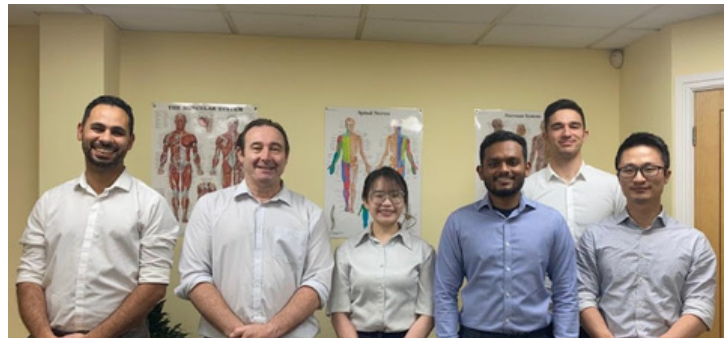
Supporting Local Businesses

Milton Keynes Chiropractic Clinic

Milton Keynes Chiropractic Clinic has been a part of the community for over 15 years. Their philosophy is 'get people better, but be safe first'. This can only be done if the problem is properly understood and all factors that may be contributory are ascertained.

The first thing you notice when you walk into the clinic is the sense of calm. Welcomed by a friendly team who clearly know their regular patients too.

It is a refurbished clinic, benefiting from private changing rooms, X-Ray facilities on site, spacious modern treatment and consultation rooms, comfortable waiting room. Plus private patients car park on site which makes accessing these services even more convenient.



What is Chiropractic treatment?

Chiropractic is a regulated profession that offers healthcare for patients of all ages anything from acute/short term to chronic/long term. The MK Chiropractic Clinic are also passionate about providing you with the tools to support your own health and recovery with lifestyle, diet and exercise advice.

The main difference with Chiropractic treatment is its holistic approach. Which means they look at the whole picture of how you spend your time and not just the short term of how an injury occurred.

Milton Keynes Chiropractic Clinic pride themselves on offering the right treatment and approach for each individual and do not offer generic packages – keeping cost and time lower for you.

The patient first approach that Milton Keynes Chiropractic Clinic take is not only seen in the way they treat patients and the facilities but also in their opening hours.

Appointments available from 09:00 – 21:00 Monday to Friday and 09:00-14:00 on Saturdays.

Milton Keynes Chiropractic Clinic are proud to be the official chiropractor for MK Dons Football Club.

Milton Keynes Chiropractic Clinic are always happy to have a chat to see how they can help, so be sure to get in touch directly for any questions.

Milton Keynes Chiropractic Clinic is located at 63 Aylesbury St, Fenny Stratford, Bletchley, Milton Keynes MK2 2BJ

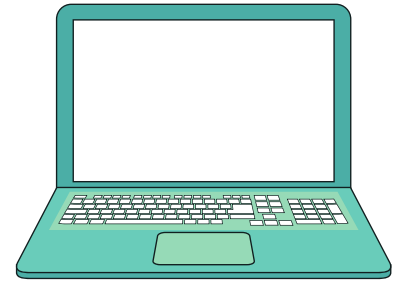


Do you need help finding a job?

We can help! Come down to Job Club at Spotlight.
We offer free employment support sessions for jobseekers.

Each session offers:

- Advice and guidance
- CV Building
- Interview preparation and techniques
- Help with job search and completing application forms
- Access to free work-related training courses
- Jobseekers to gain the tools, skills and confidence to step back into employment



Mondays 10am-12pm and Wednesdays 2pm-4pm
At Spotlight, Serpentine Court, Lakes Estate, MK2 3QL

For all enquiries please contact
01908 252323
nep@milton-keynes.gov.uk

Counselling and Wellbeing Support

Bletchley and Fenny Stratford residents can access subsidised counselling and wellbeing support as the town council continues to work in partnership with the West Bletchley Wellbeing Counselling Service.

With the free Counselling Service you are assured of a welcoming and comfortable environment, focused on your individual needs. You will work with a skilled and sensitive Counsellor who is there to help you make sense of what is happening in your life, explore how you would like things to be and how to make your situation manageable on your terms. You will not be given advice; nor will you be judged. The counsellor will help you to express your feelings and explore your issues in an accepting atmosphere.

Our Counsellors are fully qualified and registered with the relevant membership associations. West Bletchley Counsellors come from a wide range of backgrounds and specialise in different areas of Counselling including, but not limited to:

- anxiety
- bereavement and loss
- stress
- relationship difficulties
- work-related issues
- alcohol and drug dependency
- abuse
- low self-worth/image
- sexual/gender identity
- trauma
- life changes
- loneliness/isolation



If anyone feels that they would benefit from some support, please call or email and the Counselling Service will carry out an initial assessment to see if this is the right support service for you.

Please call: 01908 370 860 (phone lines are open between 10am-12pm and 2pm-4pm with voicemail facilities available too) or email: wbcounselling@btconnect.com

Find out more on the Counselling Service's website: <http://bit.ly/31ca3rE>



WHO ARE WE?

Founded in 2021, **MKARE** is a specialist domiciliary care service provider delivering personal and clinical care within your residence. The company was created by two **NHS** nurses, with 50 years of combined nursing and clinical experience. Based in **Milton Keynes**, we are able to deliver our care service within a 20-mile radius of our head office by a team of **highly skilled health professionals**.



Telephone: 07500 18 54 18

Email: mkare@mkare.uk

[www: mkare.uk](http://www.mkare.uk)

*Bletchley and Fenny Stratford Town Council does not endorse or recommend the third-party companies, products, or services



Bishop Parker Catholic Nursery and School

www.bishopparker.co.uk

"Pupils are inspired at this thoughtful, caring school"

Ofsted September 2023

*Qualified and experienced teacher and teaching assistants.

*Fantastic nursery building and outdoor learning environment.

*Breakfast club from 8am.

* Children from ALL faiths/non faith backgrounds are welcome at our school.

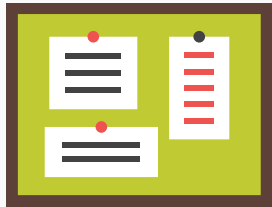
For more information contact: 01908 372129 or email office@bishopparker.co.uk

**Nursery places
now available**

**Flexible half
and full day
sessions
available**



Local Contacts and Updates



Community Noticeboard

Your neighbourhood policing team are working on issues identified by the local community and the police.

To contact them call: 101

This is a non-emergency number

Alternatively, email them on:

MKBletchleyCluster@thamesvalley.pnn.police.uk

www.thamesvalley.police.uk



Neighbourhood Policing

Working in partnership to make our community safer

Citizens Advice MK – Free confidential advice on subjects including debt and housing
Freephone 0808 278 7991

Age UK MK – Support for Older People -
01908 550 700

MK Money Lifeline – Call 0300 1235 198

MK Act – Domestic Abuse Charity - 0344 375 4307

Samaritans - Mental Health Support -
Call for Free 116 123

Carers MK - Supports the health and wellbeing of carers - 01908 231 703



Milton Keynes City Council Ward Councillors



Bletchley East Ward



Councillor Mohammed Khan
email: mohammed.khan@milton-keynes.gov.uk



Councillor Emily Darlington
email: emily.darlington@milton-keynes.gov.uk



Councillor Ed Hume
email: ed.hume@milton-keynes.gov.uk

Bletchley Park Ward



Councillor Nigel Long
email: nigel.long@milton-keynes.gov.uk



Councillor Waqas Ahmad
email: waqas.ahmad@milton-keynes.gov.uk



Councillor Mohammad Imran
email: mo.imran@milton-keynes.gov.uk

Local MP - Iain Stewart

Phone: 01908 686 830

Email:

iain.stewart.mp@parliament.uk

Letter: Suite 102,

Milton Keynes Business Centre,
Foxhunter Drive, Linford Wood
MK14 6GD



Bletchley & Fenny Stratford Town Councillors

Newton Leys

Chair

Cllr Ethaniel Kelly-Wilson

ethaniel.kellywilson@

cllr.bletchleyfennystratford-tc.gov.uk



Cllr Ismail Hussein

ismail.hussein@

cllr.bletchleyfennystratford-tc.gov.uk



Cllr Uche Osumili

uche.osumili@

cllr.bletchleyfennystratford-tc.gov.uk



Central Bletchley

Vice Chair

Cllr Richard Graham

richard.graham@

cllr.bletchleyfennystratford-tc.gov.uk



Queensway & Denbigh North

Cllr Ron Haine

ron.haine@

cllr.bletchleyfennystratford-tc.gov.uk



Cllr Jay Joshi

jay.joshi@

cllr.bletchleyfennystratford-tc.gov.uk



Manor South

Cllr Keith Ely

keith.ely@

cllr.bletchleyfennystratford-tc.gov.uk



Cllr Ayesha Khanom

ayasha.khanom@

cllr.bletchleyfennystratford-tc.gov.uk



Cllr Terry Stephens

terry.stephens@

cllr.bletchleyfennystratford-tc.gov.uk



Granby

Casual Vacancy

Manor North

Cllr Liz Campbell

liz.campbell@

cllr.bletchleyfennystratford-tc.gov.uk



Manor North & Eaton Leys

Casual Vacancy

Eaton North

Cllr Samantha Browne

samantha.browne@

cllr.bletchleyfennystratford-tc.gov.uk



Cllr Andrew Palmer

andrew.palmer@

cllr.bletchleyfennystratford-tc.gov.uk



Cllr Ed Hume

ed.hume@

cllr.bletchleyfennystratford-tc.gov.uk



Fenny Stratford

Cllr E'Amonn O'Rourke

eamonn.orourke@

cllr.bletchleyfennystratford-tc.gov.uk



Cllr Axel Segebrecht

axel.segebrecht@

cllr.bletchleyfennystratford-tc.gov.uk



Cllr Othelia Fernandes

othelia.fernandes@

cllr.bletchleyfennystratford-tc.gov.uk



Eaton South

Cllr Mariee Wymer

mariee.wymer@

cllr.bletchleyfennystratford-tc.gov.uk



Cllr Gavin Bedford

gavin.bedford@

cllr.bletchleyfennystratford-tc.gov.uk



Casual Vacancy

Contact Us

Phone 01908 649 469

Website: www.bletchleyfennystratford-tc.gov.uk

Email: info@bletchleyfennystratford-tc.gov.uk

The Town Council's main office is based at Sycamore House, Drayton Road, Water Eaton, Bletchley, MK2 3RR
These offices are currently open to the public between 9am-1pm on Mondays and 9am-4pm on other weekdays.

The best way to keep up to date is by following us on our social media channels.

